



# morton.

Wentworth Point G13113/1 Bennelong Parkway

2 1 1

This two bedroom with one bathroom and one powder room. All set for summer and capturing a leafy outlook over Woo-la-ra parklands, this 'One the Waterfront' security apartment offers a stylish home close to the heart of Wentworth Point. Smartly designed to give it a sleek contemporary feel, it offers a fresh and bright living space that's great for entertaining and is quietly positioned with easy access to all village amenities.

- Quietly positioned within an immaculate security building
- A wide enclosed terrace that flows easily off the living space
- Air-conditioned open design with combined lounge/dining area
- Smartly appointed kitchen with stone benches and gas fittings
- Two bedrooms include a large main that opens onto the balcony
- Security car space, storage cage, lift access and intercom entry
- Access to the Pulse Club swimming pools, gym and tennis

### View

As advertised or by appointment

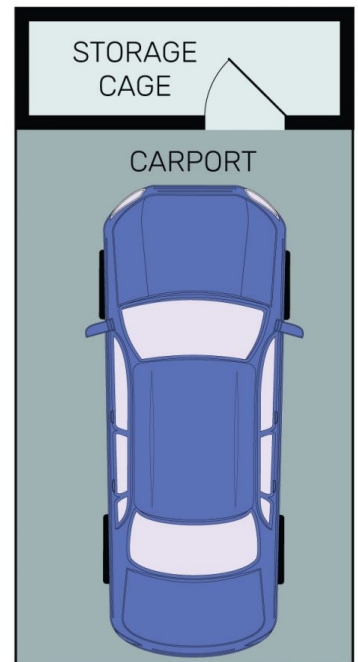
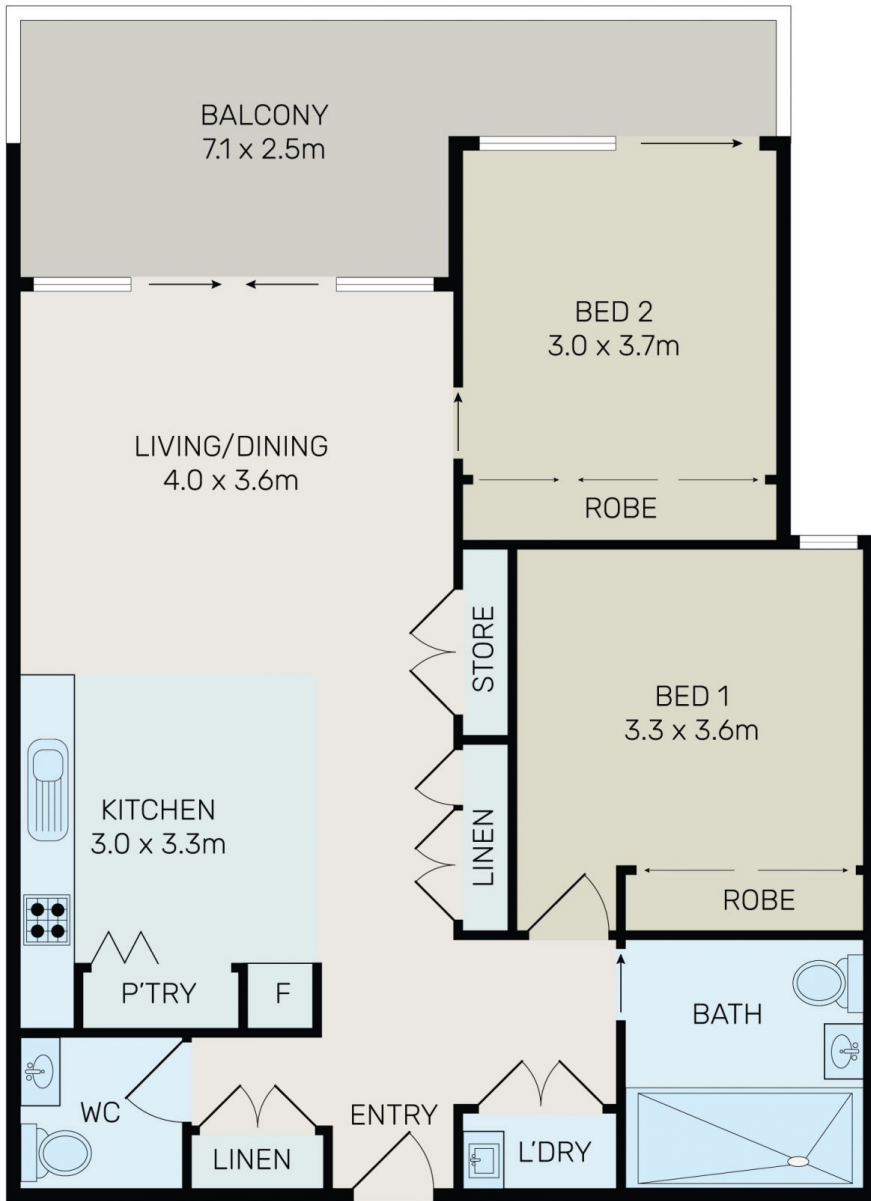
### Agent

**Vivian Zhang**

0447 964 200

vivian@morton.com.au

[morton.com.au](http://morton.com.au)



All information contained herein is gathered from all sources we believe to be reliable. However we cannot guarantee its accuracy and interested parties should rely on their own enquiries.



# G13113/1 Bennelong Parkway, Wentworth Point