



morton.

Luddenham 14 Portrush Crescent

6 4 7

This large single storey property, built for multi-generational living, is privately positioned away from the road, and sits on over an acre of land. Backing onto a leafy bush outlook, and surrounded by mature landscaped gardens, this contemporary home with a flowing floorplan and quality finishes throughout, provides low maintenance, luxurious living for a discerning family.

- Chef's kitchen with sleek European appliances and a separate fully fitted alfresco kitchen
- Impressive all-weather alfresco dining/lounge with Haiku ceiling fans and underfloor heating
- Enormous formal living with high ceilings and a grand stone-clad gas fireplace
- Separate relaxed family/meals area off kitchen with easy access to the alfresco/pool area
- Sunny inground pool shaded by commercial grade sail with adjoining paved lounging patio
- Secure child-friendly garden with glass pool fencing and electric driveway sliding gate

morton.com.au

View

As advertised or by appointment

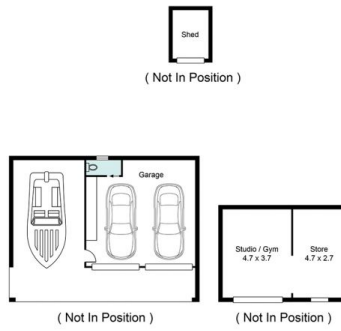
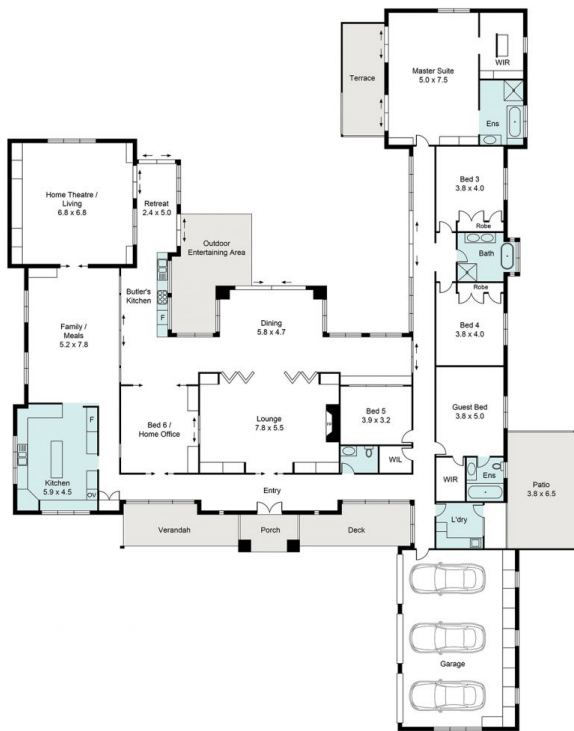
Agents

Konstantin Melnikov

0421 540 424
konstantin@morton.com.au

Ferenc Goemoeri

0447 025 423
ferenc@morton.com.au



14 Portrush Crescent, Luddenham



Every care has been taken to verify the accuracy of the details and dimensions in this property plan. Prospective purchasers are advised to make their own enquiries to satisfy themselves in all respects. The plan is a representation only and is not necessarily to scale.