



**morton.**

**Rosebery** 252/20 Confectioners Way

 2  2  1

This spectacular apartment is located in the inner east suburb - Rosebery, which is quietly and conveniently located nearby UNSW, East Village Shopping Centre and a variety of fine cafes and restaurants.



This luxury apartment is crafted by high ceilings and enriched with superb natural light. The kitchen, fit with island bench flows to the living & dining area, which associated with stone tops, a spacious array of fine appliances. The facilities include a resort-style indoor swimming pool, gymnastic, onsite building manager and secured basement car space with direct lift access.

#### View



As advertised or by appointment

#### Agents

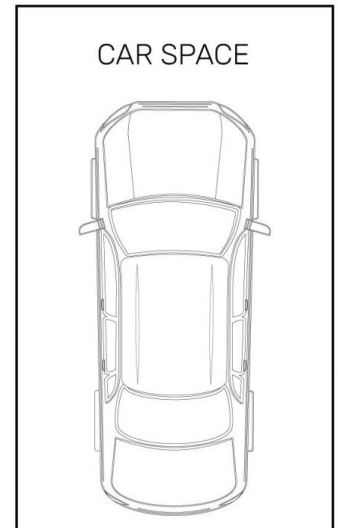
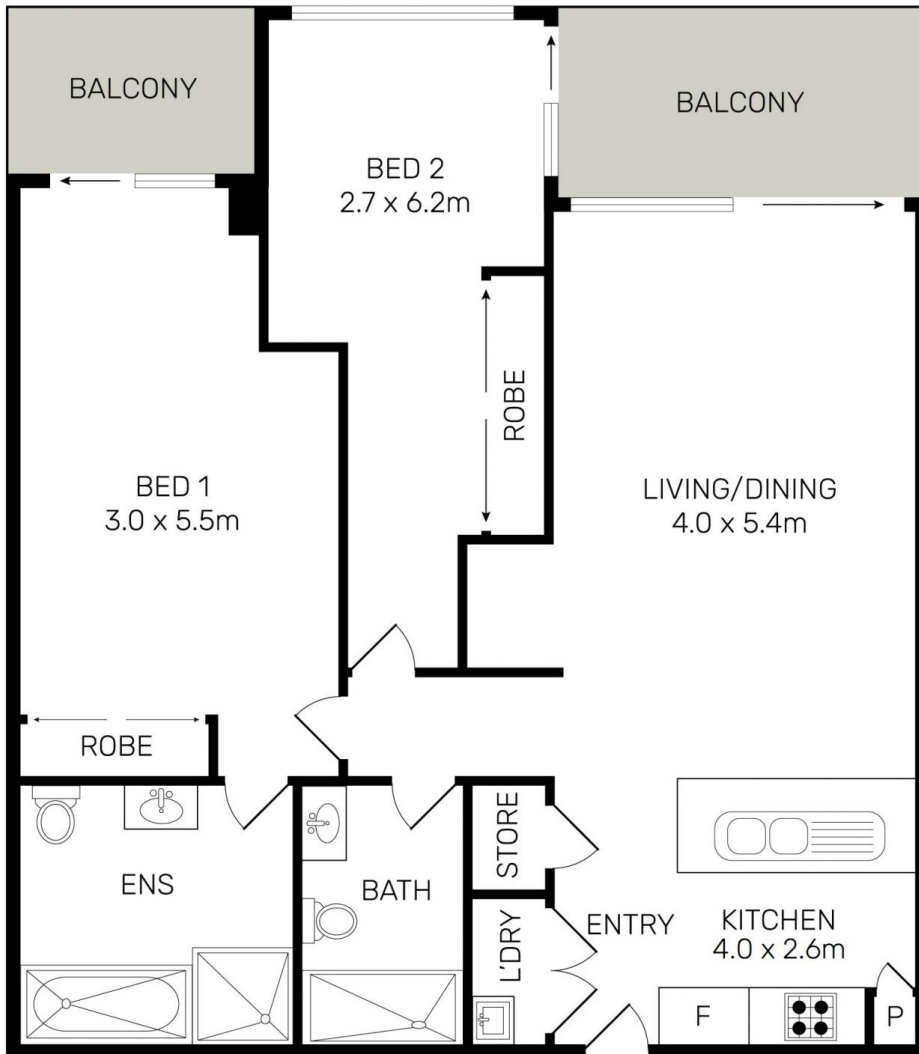
##### Calvin Chan

 0406 888 028  
 calvin@morton.com.au

##### Jackson Figueiras

 0448 764 345  
 jackson@morton.com.au

[morton.com.au](http://morton.com.au)



All information contained herein is gathered from all sources we believe to be reliable. However we cannot guarantee its accuracy and interested parties should rely on their own enquiries.

