



# morton.

**Woolloomooloo** 348/6 Cowper Wharf Roadway

1 1

Commanding a spectacular waterfront position on the heritage level of the renowned Finger Wharf. Sensational views that stretch across the water this apartment embraces a desirable cosmopolitan lifestyle.

- Panoramic view up to Potts Point
- Generously proportioned interiors
- Bright and welcoming
- Integrated granite kitchen, stainless steel gas cooktop
- Original exposed beams, soaring traditional ceilings
- Double bedroom complete with a built-in wardrobe
- 24 hour on site security, internal laundry, reverse air con

## View

As advertised or by appointment

## Agents

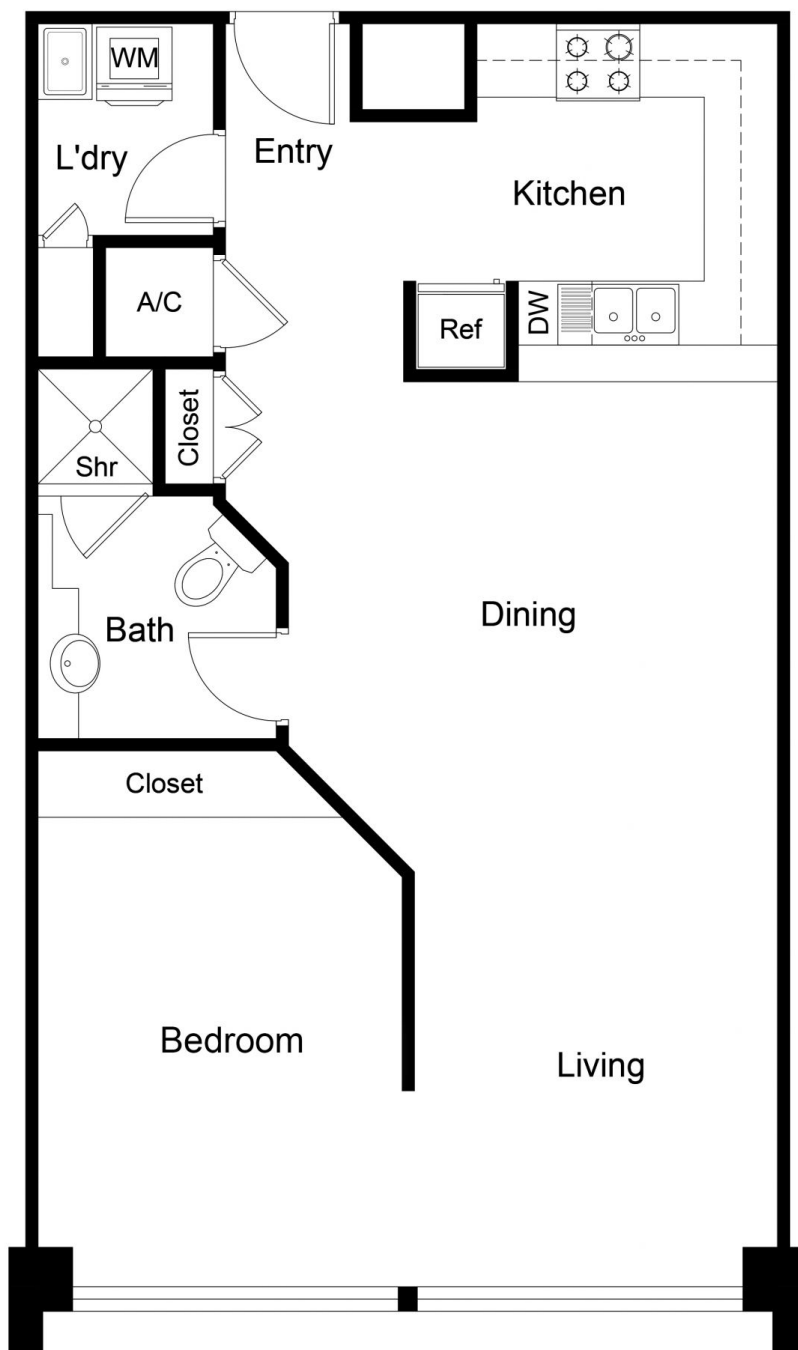
### Noel Jenkins

0410 593 694  
noel@morton.com.au

### Amanda Clement

0448 016 404  
amanda.clement@morton.com.au

**morton.com.au**



FLOOR PLAN