



# morton.

**Bondi Junction** W1003/310-330 Oxford Street

1 1 1

In the heart of Bondi Junction, this privately positioned apartment offers magnificent unobstructed outlook onto Sydney city skyline and harbour. With a Northern outlook, modern finishes, flow-through layout and floor to ceiling windows throughout, this apartment offers plentiful space to relax or entertain. Just minutes from Bondi Junction train station, the Sydney CBD is less than 20 minutes away.

- ? Bathed in natural light bedroom with built-ins
- ? Open plan living and dining filled with natural light
- ? North facing entertainer's balcony
- ? Polished hardwood floors and modern finishes
- ? Internal laundry and ample built-in storage
- ? Secure foyer with level lift access, video intercom
- ? Common rooftop garden with views out over the harbour

Water: \$163.20 p/q approx.

Council: 323.20 p/q approx.

With an easy access from foyer to Oxford Street and Hegarty

**morton.com.au**

## View

As advertised or by appointment

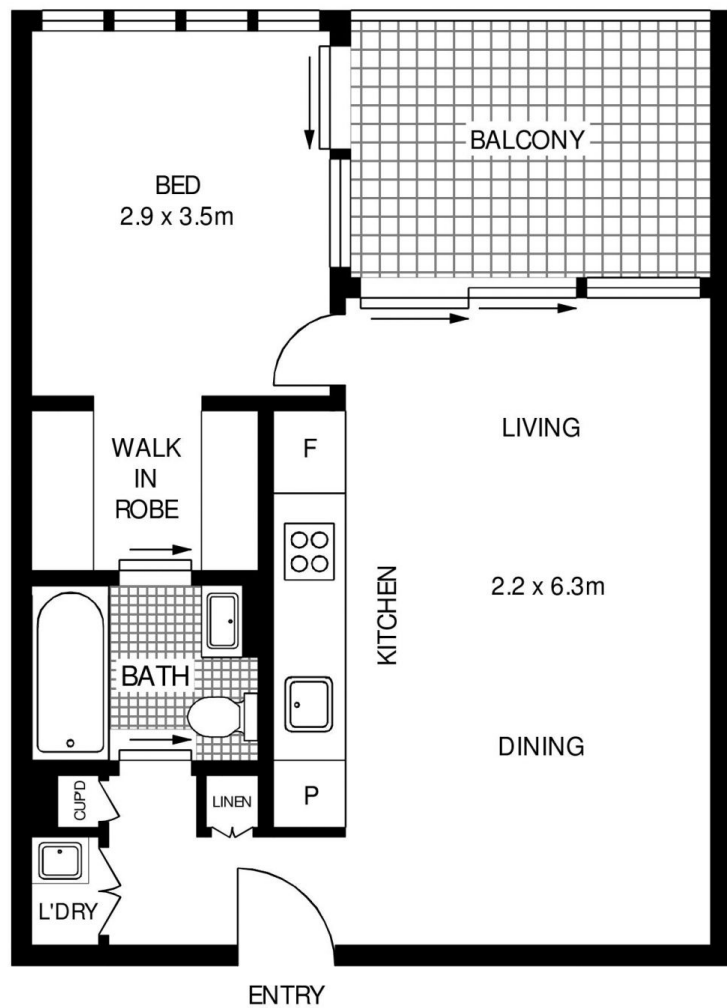
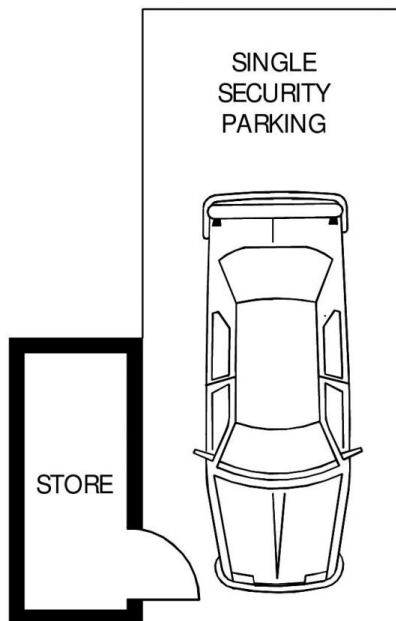
## Agents

### Ettiene West

0410 593 749  
ettiene@morton.com.au

### Emma Ryan

0409 325 440  
emmar@morton.com.au



W1003/310 OXFORD STREET

BONDI JUNCTION

SCAPE Floor Planning Disclaimer: This floor plan is conceptual only. It is provided for illustrative purposes only and should not be relied upon. We make no guarantee as to the correctness of this plan. All interested parties should make and rely on their own enquiries in determining the accuracy of the information contained in this floor plan.