



# morton.

**Glebe** 421/6 Cowper Street

 1  1  1

Exclusively situated in the Arthouse building and within the contemporary Art Deco style WEST END RESIDENCES, this over-sized one bedroom apartment is a hybrid of inner-city connectivity and village lifestyle; boasting premium finishes and expansive, light-filled interiors.

- Sleek kitchen with stone bench tops, gas cooking and dishwasher
- Queen-sized bedroom with built-in robes and access to balcony
- Spacious combined living and dining area
- Separate study/potential storage or home office
- Modern bathroom, separate internal laundry, audio/visual intercom
- Ducted Air conditioning, secure parking with storage
- Manicured rooftop gardens with BBQ and distant iconic views
- Architect-designed by Turner Studios, developed by Roxy-Pacific
- Secure basement level parking, ample visitor parking

[morton.com.au](https://morton.com.au)

## View

As advertised or by appointment

## Agents

### Ian Qiu

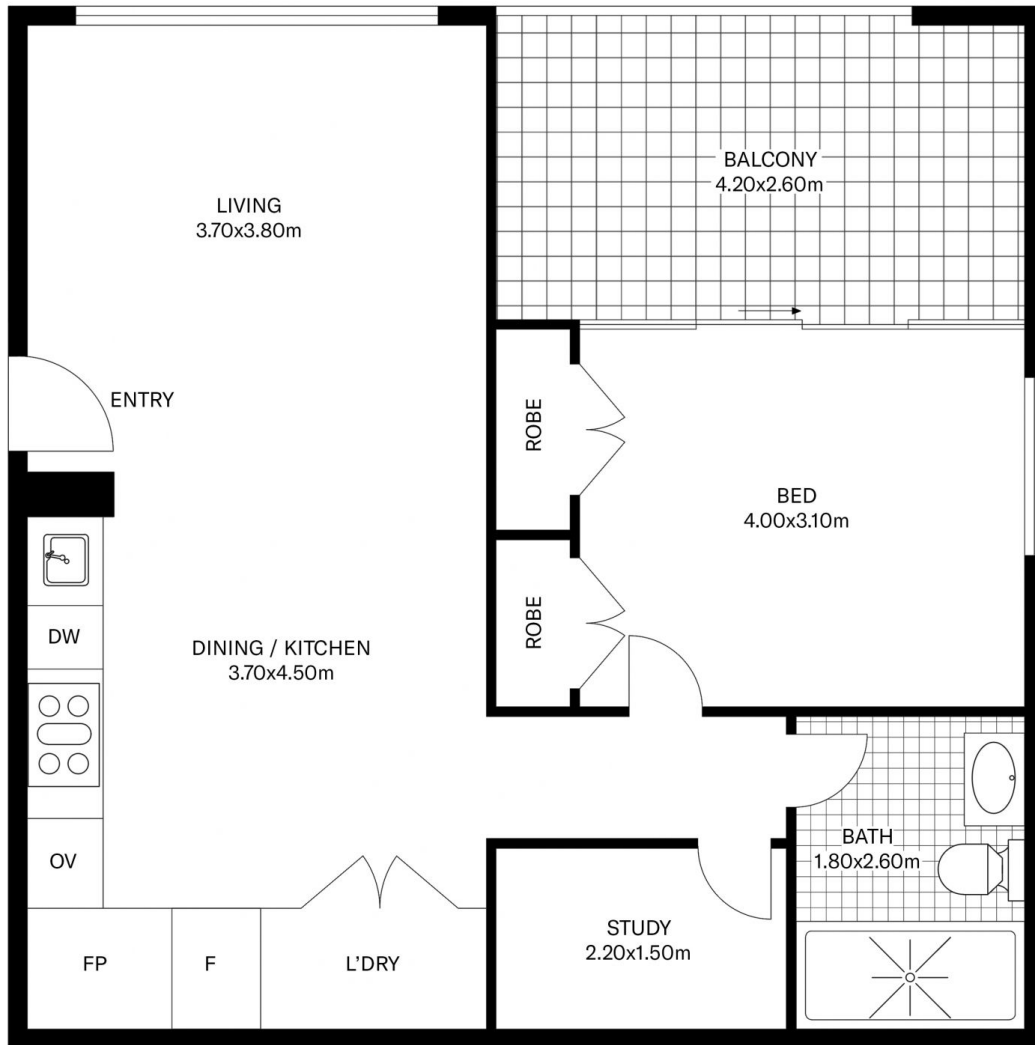
 0447 696 425

 [ian@morton.com.au](mailto:ian@morton.com.au)

### Naomie Texier

 0439 247 710

 [naomie@morton.com.au](mailto:naomie@morton.com.au)



C421/6 COWPER ST. GLEBE

PYRMONT

SCAPE Floor Planing Disclaimer: This floor plan is conceptual only. It is provided for illustrative purposes only and should not be relied upon. We make no guarantees to the correctness of this plan. All interested parties should make and rely on their own enquiries in determining the accuracy of the information contained in this floor plan.