



morton.

Homebush 15/51 Loftus Crescent

 2  2  2

A well-proportioned retreat of style, light and quality, this ultra-sleek apartment features contemporary spaces and a great in/outdoor layout for ease of entertaining. The home showcases a flowing single-level design that delivers low-maintenance living with a stunning modern finish, along with its high-set position that captures tree-filled outlooks.



- Well-positioned in the architectural Tianna security complex
- Sizeable open layout featuring distinct living and dining areas
- An easy level flow to an extra-large entertainment balcony
- Full designer kitchen with a breakfast bar and gas cooktop
- Two carpeted double bedrooms both have built-in storage
- Main has an ensuite plus there is an extra guest bathroom
- Two side-by-side car spaces plus storage and lift access
- Air-conditioning, double glazed windows and internal laundry

View



As advertised or by appointment

Agents

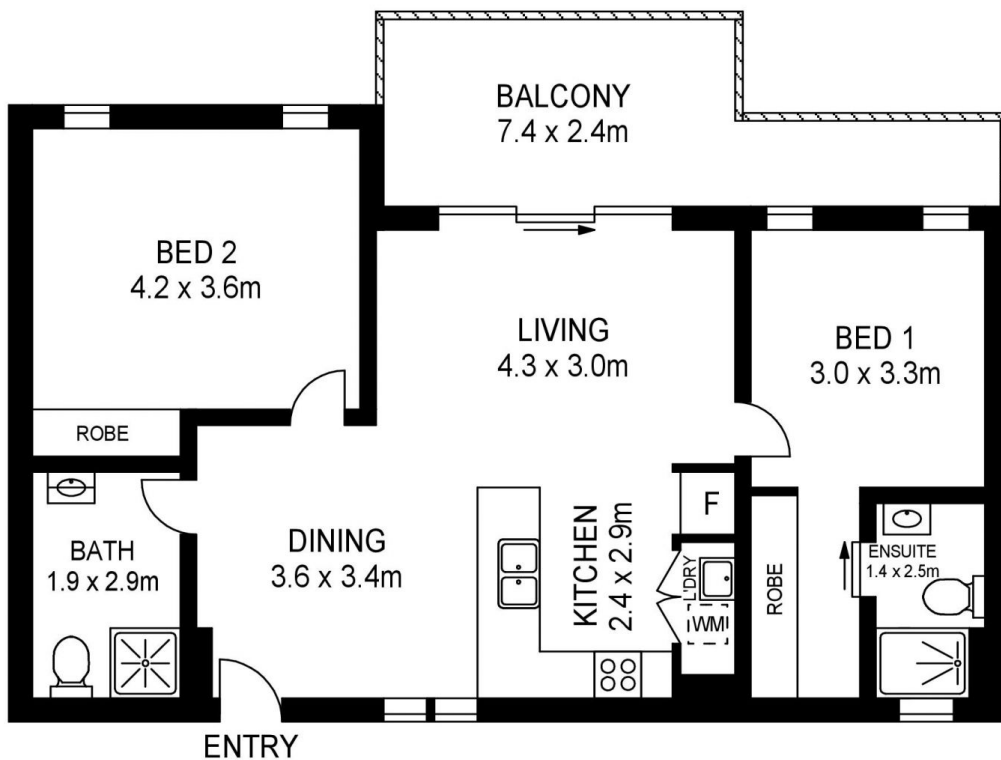
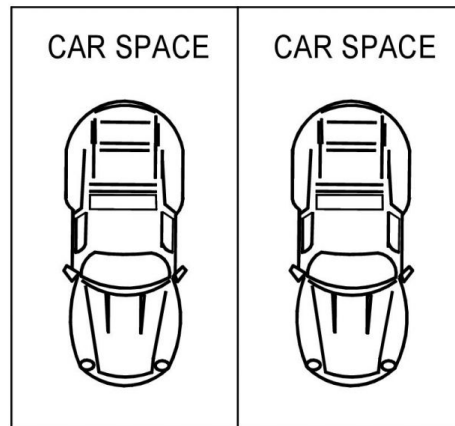
Akanksha Chaudhari

 0447 201 786
 akanksha@morton.com.au

Dylan Choe

 0416 932 977
 dylanchoe@morton.com.au

morton.com.au



15/51 LOFTUS CRESCENT, HOMEBUSH



www.assetphotographers.com.au

Please note these measurements are approximate only. The plans is intended as a rough guide for illustrative purpose. It is not warranted or guaranteed to be correct nor it is part of the sale or rental contract