



# morton.

**Pyrmont** 148/120-140 Pyrmont Street

 2  2  1

Located on the outskirts of the city, this apartment provides a serene and tranquil environment, with a flexible layout and abundant natural light. Remarkably, this apartment is one of the most expansive two-bedroom units in the building, with the bedrooms and bathrooms situated on opposite ends of the apartment, separated by a capacious and airy open-plan living and dining area.

- Formal and informal living plus dining with timber floors
- Opens to enclosed sun room and second sundrenched balcony
- Master bedroom with walk in wardrobe and ensuite with bathtub
- Equally spacious second bedroom with built-in wardrobes
- Superb kitchen, ample bench space and stainless steel appliances
- Full sized laundry with shelving
- Ample amount of internal storage, large lock-up garage
- Full building security with concierge
- Rooftop entertaining deck with stunning Sydney views

[morton.com.au](https://morton.com.au)

### View

As advertised or by appointment

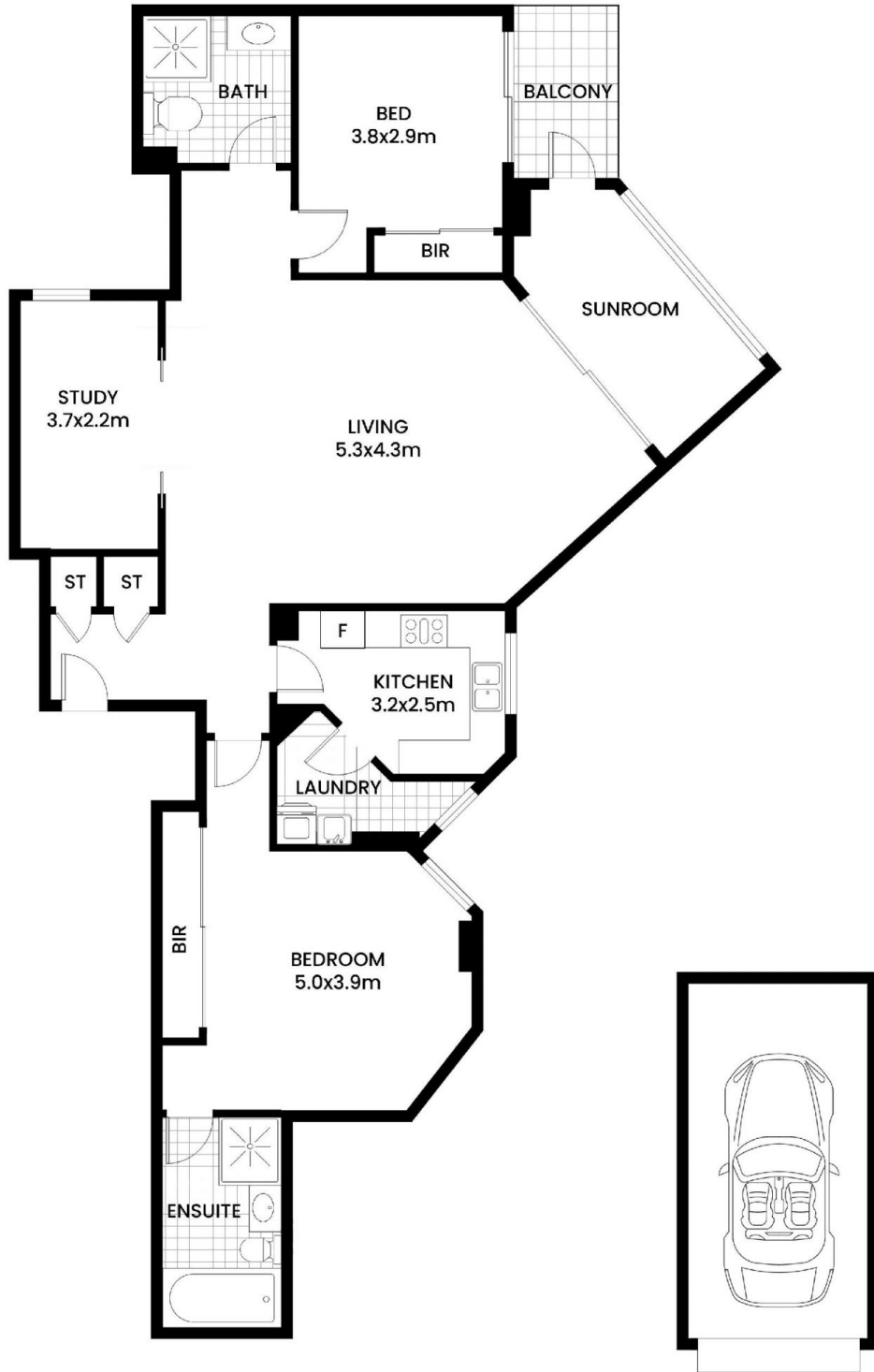
### Agents

#### Ian Qiu

 0447 696 425  
 [ian@morton.com.au](mailto:ian@morton.com.au)

#### Naomie Texier

 0439 247 710  
 [naomie@morton.com.au](mailto:naomie@morton.com.au)



148/120 Pyrmont St,

Pyrmont

SCAPE Floor Planing Disclaimer: This floor plan is conceptual only. It is provided for illustrative purposes only and should not be relied upon. We make no guarantees to the correctness of this plan. All interested parties should make and rely on their own enquiries in determining the accuracy of the information contained in this floor plan.