



**morton.**

**Wentworth Point** D7068/7 Bennelong Parkway

 1  1  1

Delivering the perfect mix of fresh design, modern finishes and generous in/outdoor living, this two bedroom courtyard apartment is a private haven in the popular One The Waterfront community. It has been very well planned to embrace low maintenance living and entertaining.



- Garden level position with own entrance via the courtyard
- Crisp and fresh interiors feature a light-filled open design
- A large-sized personal courtyard for outdoor entertaining
- Direct access to the landscaped shared gardens
- Spacious bedroom with built-ins
- Second bedroom with courtyard access
- Gas-equipped kitchen, modern bathroom, internal laundry
- Security car space and lock-up storage cage in the basement

#### View



As advertised or by appointment

#### Agents

##### Dylan Choe

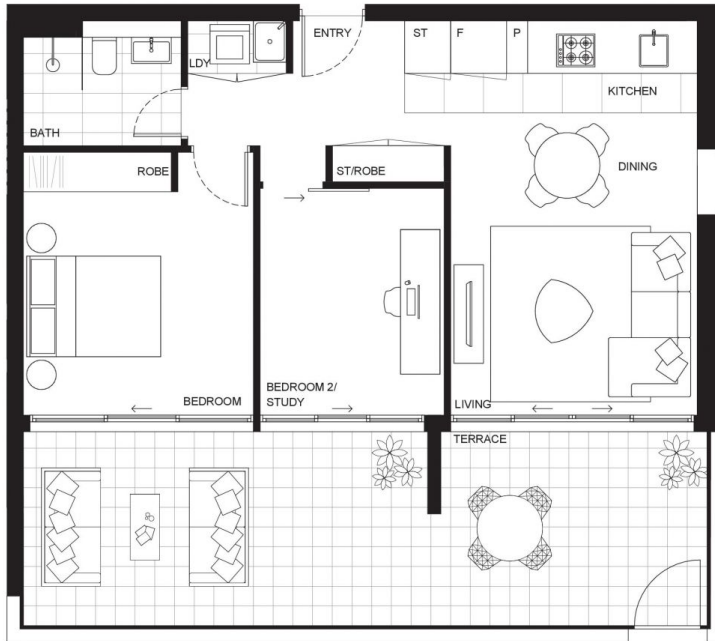
 0416 932 977  
 dylanchoe@morton.com.au

##### Akanksha Chaudhari

 0447 201 786  
 akanksha@morton.com.au

[morton.com.au](http://morton.com.au)

BUILDING  
ONE D



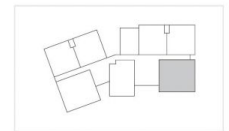
Disclaimer: This plan is a guide only and does not constitute an offer or contract. Please note changes may be made during the development and areas, fittings, fixtures and specifications are subject to change without notice in accordance with the terms of the contract of sale. All parties must rely on their own investigation to validate this information as it is not guaranteed. No liability will be accepted for any inaccuracy/misstatement. **(Date Issued 04/09/15 B)**

ONE  
THE WATERFRONT

APARTMENT | LOT  
**7068 | 110**

1 Bed + Study

INTERNAL 61m<sup>2</sup>  
EXTERNAL 31m<sup>2</sup>  
**TOTAL 92m<sup>2</sup>**



BUILDING ONE D LEVEL 7

ONE THE WATERFRONT DISPLAY CENTRE  
Shop 4E, The Piazza, 21 Bennelong Parkway  
Wentworth Point NSW 2127  
1300 865 465 onethewaterfront.com.au

DEVELOPED BY **PIETYTHP** SALES BY **LINK**