



# morton.

**Surry Hills** 201/8-10 Fitzroy Place

 2  2  1

The finest 2-bedroom, 2 bathroom located in a boutique development completed only in 2020, this north facing residence in the 'Fitzroy' is a prime opportunity to purchase in the best location Surry Hills has to offer. Luxury finishes throughout with light filled flow-through open floorplan.

Destined to set a new local benchmark in design and quality, 'The Fitzroy' enjoys a rare sense of privacy and seclusion hidden in quite cul-de-sac. Within moments of fine dining restaurants, cafes, entertainment venues, shopping on Crown, William and Oxford Street and public transport options including the light rail and Central station.

- Designer finishes with warm timber joinery
- Oversized Designer Galley Kitchen
- Porcelain stone from Italy, integrated appliance
- North aspect capturing daily sunlight
- Ducted air-conditioning, freshly painted
- Covered generous size terrace
- Lift access and storage cage



[morton.com.au](https://morton.com.au)

### View



As advertised or by appointment

### Agents

#### Ettiene West

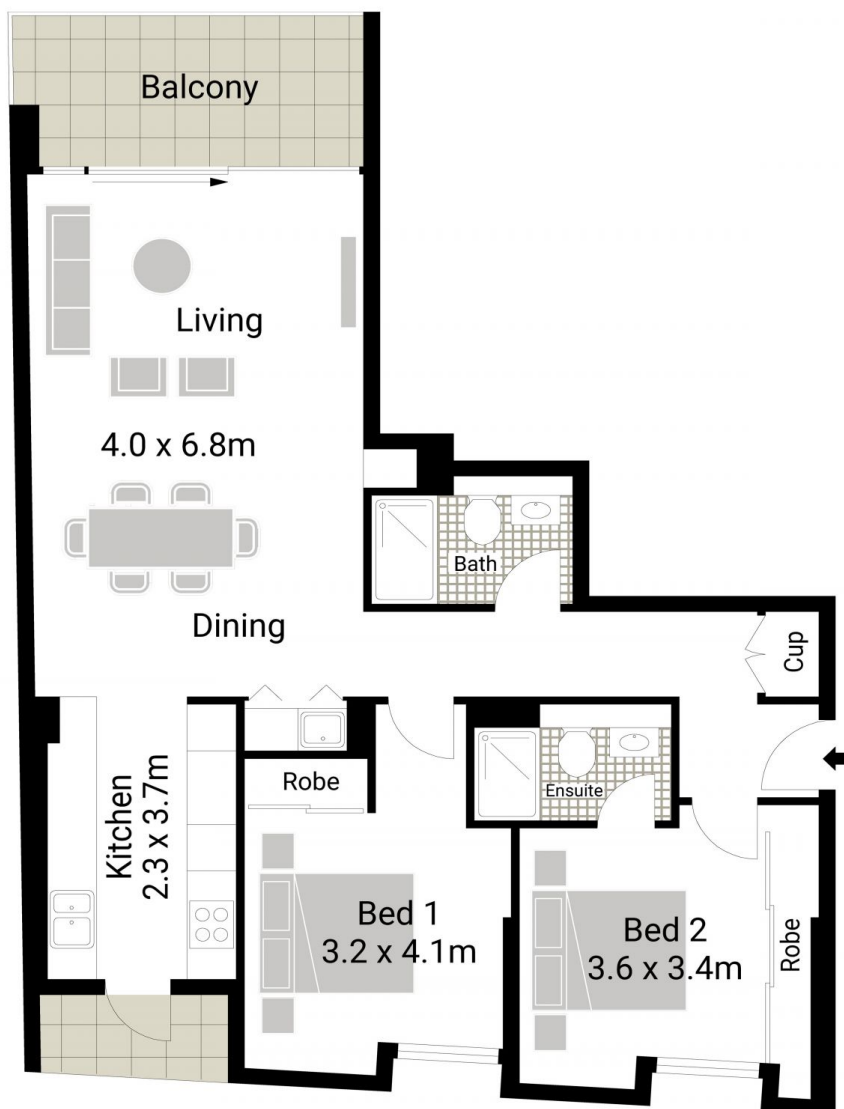
 0410 593 749  
 [ettiene@morton.com.au](mailto:ettiene@morton.com.au)

#### Arman Zounuzy

 0410 539 793  
 [arman.zounuzy@morton.com.au](mailto:arman.zounuzy@morton.com.au)

# THE FITZROY

8 Fitzroy Place Surry Hills



|               |    |        |
|---------------|----|--------|
| INTERNAL AREA | :- | 80 SQM |
| BALCONY AREA  | :- | 9 SQM  |
| TOTAL         | :- | 89 SQM |



201 / 8 Fitzroy Place, Surry Hills

All information contained herein is gathered from sources we believe to be reliable. We cannot however guarantee its accuracy and interested parties should make and rely on their own enquiries

morton.