



morton.

Double Bay 5/50 William Street

 2  1

Beautifully enhanced with a sympathetic blend of traditional character and design, this residence is a sanctuary of rare elegance and sophistication.

As you step inside this apartment, you'll be greeted by bespoke decorative ceilings and ornate features. Filled with light, generous proportioned rooms and brand new oak floors throughout, this property is a sanctuary of rare elegance and sophistication. Blessed with only one minor common wall this is a gem with a unique distinction in a boutique block of six.

This Art Deco beauty is located in the heart of Double Bay, one of Sydney's most coveted and prestigious neighbourhoods. Just a stone's throw from exclusive boutiques, high-end restaurants, and world-class cafes, this apartment is the perfect blend of luxury, convenience, and style.

Exclusively positioned, just a short stroll to the harbour foreshores, city ferries, marina, parks, and everything that the

morton.com.au

View

As advertised or by appointment

Agents

Amanda Clement

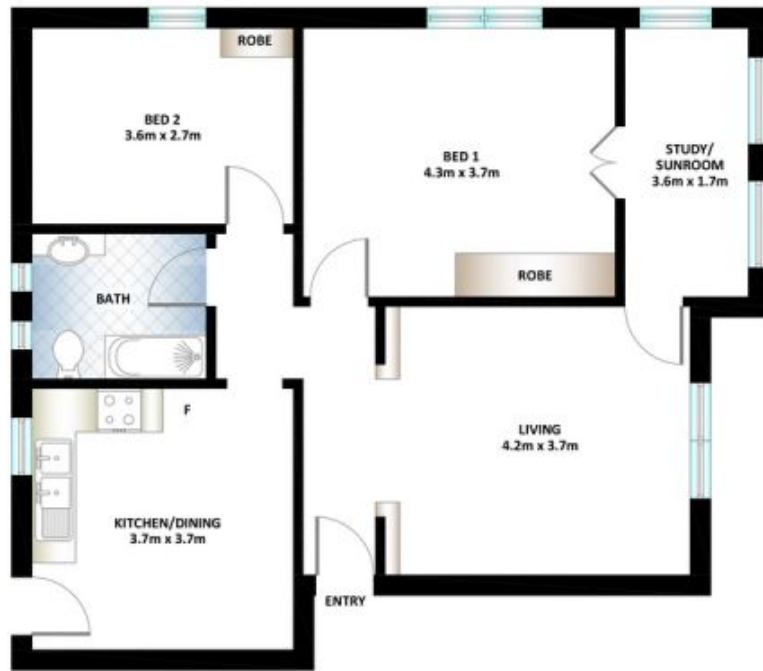
 0448 016 404

 amanda.clement@morton.com.au

Noel Jenkins

 0410 593 694

 noel@morton.com.au



DOUBLE BAY
5/50 WILLIAM STREET



***PLANS SHOWN ONLY INDICATIVE OF LAYOUT. DIMENSIONS ARE APPROXIMATE.**
This floor plan is provided for indicative purposes only.
Measurements are approximate and not to scale. The vendor, agency and supplier will accept no liability for its accuracy.
Interested parties are advised to make their own independent enquiries.