



morton.

Cremorne 403/206 Ben Boyd Road

 2  1  1

Bathed in sunlight, this spacious elevated apartment has a prized north-east position in the well maintained and tightly held Montrose building. Offering a quiet setting in a prime location with views over Cremorne and across to Middle Harbour, this property presents an exceptional opportunity for urban convenience and a vibrant lifestyle.

- North-east aspect, further enhanced by large windows on three sides
- Both double bedrooms with built-ins, main with a separate study
- Bright open plan living and dining flows to sunroom/enclosed balcony
- Well-proportioned kitchen, separate internal laundry
- Basement security parking with level lift access, lock-up storeroom
- Steps from Neutral Bay village, parks, express CBD buses

View

As advertised or by appointment

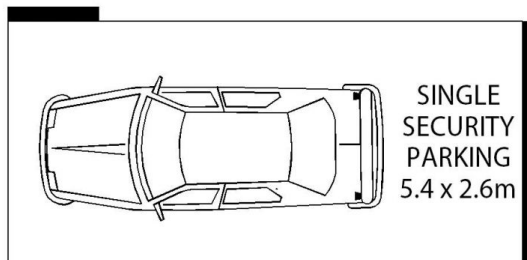
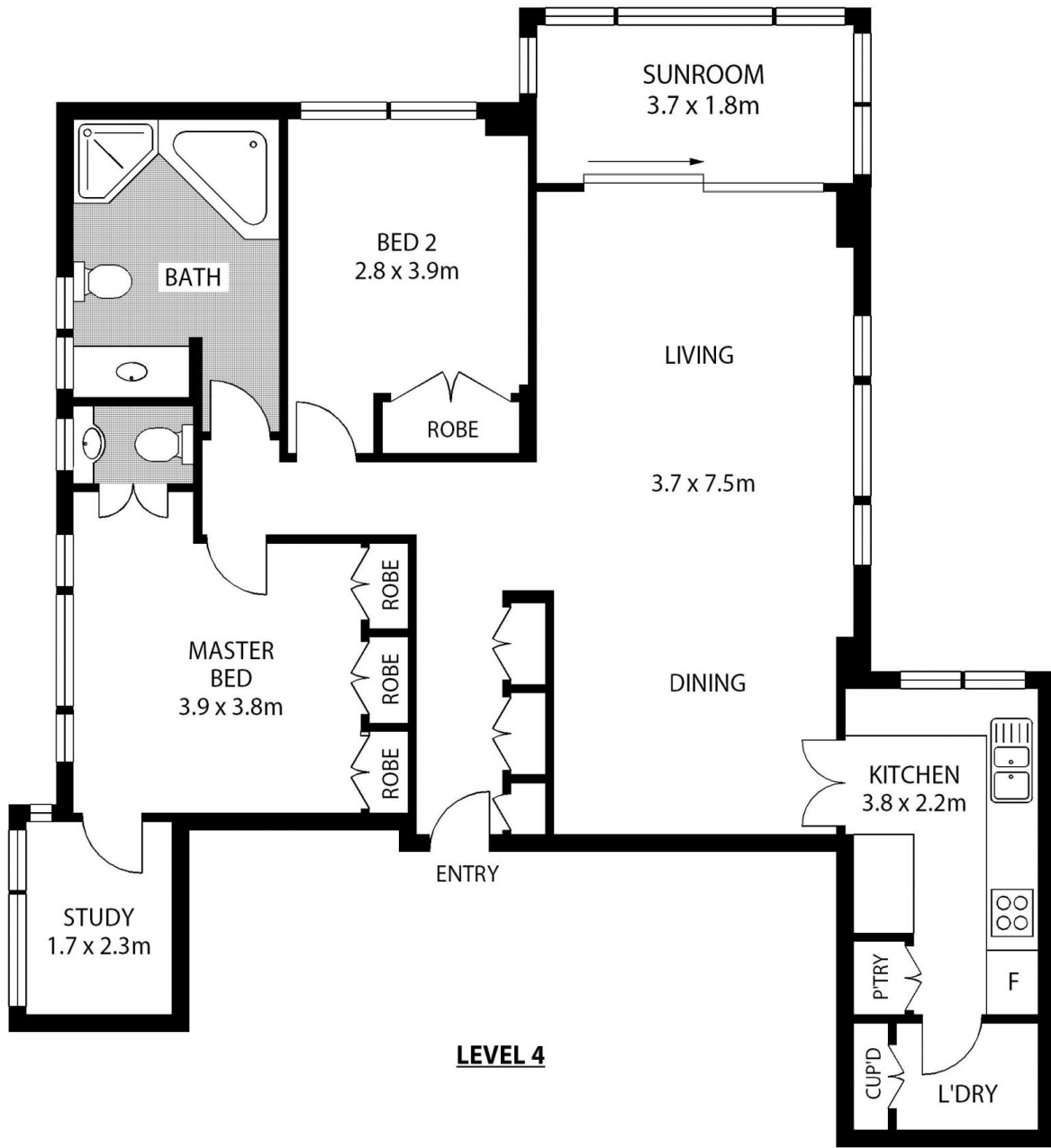
Agent

Lucy White

 0413 930 760

 lucy@morton.com.au

morton.com.au



BASEMENT LEVEL

