



morton.

Chippendale 2001/3 Carlton Street

 2  2  1

Welcome to your chance to own a rare gem - a stunning dual-key apartment that perfectly blends modern luxury and convenient city living. Nestled on the edge of Sydney's CBD, this beautiful apartment is located in the highly sought-after Central Park development. With two self-contained units, this dual-key apartment is perfect for those seeking a versatile investment opportunity or the flexibility to accommodate extended family and guests.

- Located on level 20, embracing unobstructed district views
- Modern, high-end finishes and fixtures throughout
- Open plan living with sleek designer kitchens and bathrooms
- Ducted air conditioning, security intercom, internal laundry
- 24-hour concierge, one secure car park space and storage cage
- Access to Central Park Fitness Centre with a pool, gym and spa
- Located above Central Park Mall, convenient for all your shopping requirements
- Exceptional investment property in a sought-after setting

morton.com.au

View

As advertised or by appointment

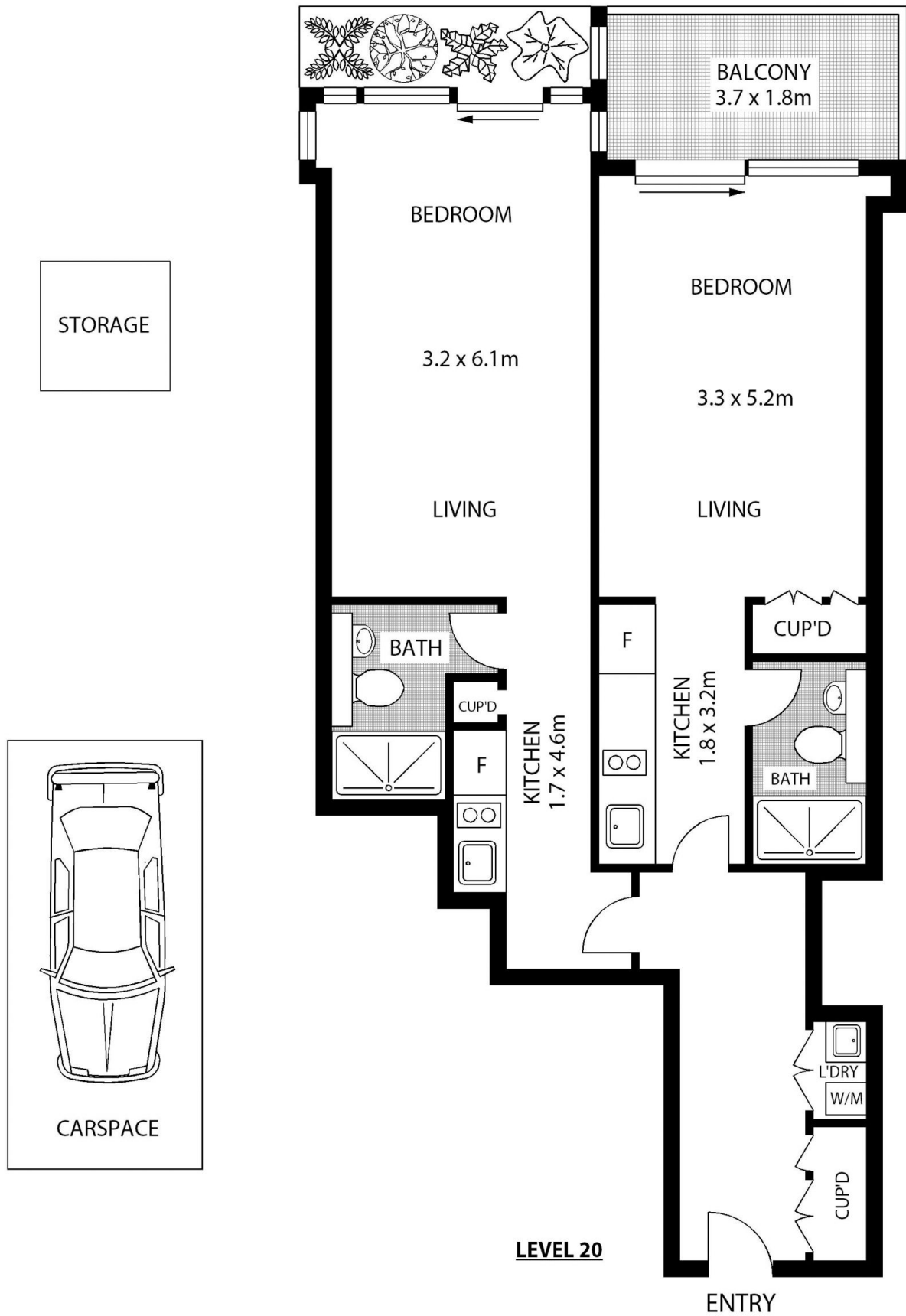
Agents

Ian Qiu

 0447 696 425
 ian@morton.com.au

Naomie Texier

 0439 247 710
 naomie@morton.com.au



2001/3 CARLTON STREET

CHIPPENDALE

SCAPE Floor Planning Disclaimer: This floor plan is conceptual only. It is provided for illustrative purposes only and should not be relied upon. We make no guarantee as to the correctness of this plan. All interested parties should make and rely on their own enquiries in determining the accuracy of the information contained in this floor plan.