



# morton.

**Wentworth Point** J10080/17 Amalfi Drive

🛏 2 🚿 2 🚗 1

Located in one of the finest and newest developments in Wentworth Point, One The Waterfront, this two bedroom apartment offers a unique luxury lifestyle with high end facilities to entertain year round while maintaining the ambiance of that relaxed lifestyle you've always wanted. Within easy access to transport services to Rhodes, Parramatta and Circular Quay, you'll be stones throw away from local eateries, shops, and amenities with The Piazza, The Promenade, Marina Square and Pierside just moments away.

- Fully furnished apartment
- Open plan design with latest in décor and finishes
- East-facing alfresco balcony
- Designer kitchen with premium Bosch built- in appliances
- Spacious carpeted bedrooms with built-in wardrobes
- En-suite in main bedroom
- Internal laundry with dryer
- Split system air-conditioning
- Secure basement parking

**morton.com.au**

## View

As advertised or by appointment

## Agents

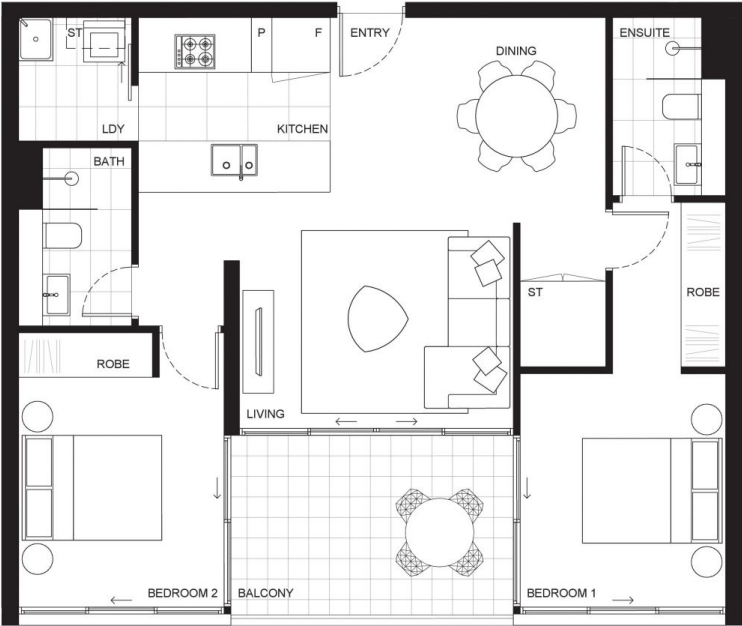
### Nevena Tsahtarlis

📞 0428 835 910  
✉ nevena@morton.com.au

### Hintha Mya

📞 0439 649 618  
✉ hintha.mya@morton.com.au

BUILDING  
ONE J



Disclaimer: This plan is a guide only and does not constitute an offer or contract. Please note changes may be made during the development and areas, fittings, fixtures and specifications are subject to change without notice in accordance with the terms of the contract of sale. All parties must rely on their own investigation to validate this information as it is not guaranteed. No liability will be accepted for any inaccuracy misstatement. (Date issued 04/04/16)

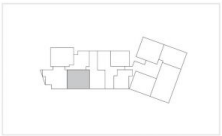
# ONE

THE WATERFRONT

APARTMENT | LOT  
**10080 | 41**

2 Bed + 2 Bath

INTERNAL	77m <sup>2</sup>
EXTERNAL	10m <sup>2</sup>
<b>TOTAL</b>	<b>87m<sup>2</sup></b>



BUILDING ONE J LEVEL 10

1300 865 465 onethewaterfront.com.au

DEVELOPED BY  
**PIETYTHP**

SALES BY  
**LINK**