



# morton.

**Pymont** 65/122 Saunders Street

🛏 2 🚿 2 🚗 1

Opening to stunning views that stretch from the top of the Anzac Bridge across the sparkling waters of Blackwattle Bay, this is the very epitome of quality city living. With a functional layout and well maintained interiors, it is literally moments to an exciting village culture.

- Expansive open plan layout with distinct living/dining spaces
- Undercover balcony embracing bridge and water views
- Bright double bedrooms, master has access to ensuite
- Smart user-friendly kitchen with custom built cabinets and stainless gas appliances
- Polished bamboo flooring, all rooms embrace district views
- Video intercom, internal laundry and oversized carspace
- Resort facilities include courtyard, gym, pool, BBQ area, sauna and on-site concierge/ building manager

## View

As advertised or by appointment

## Agents

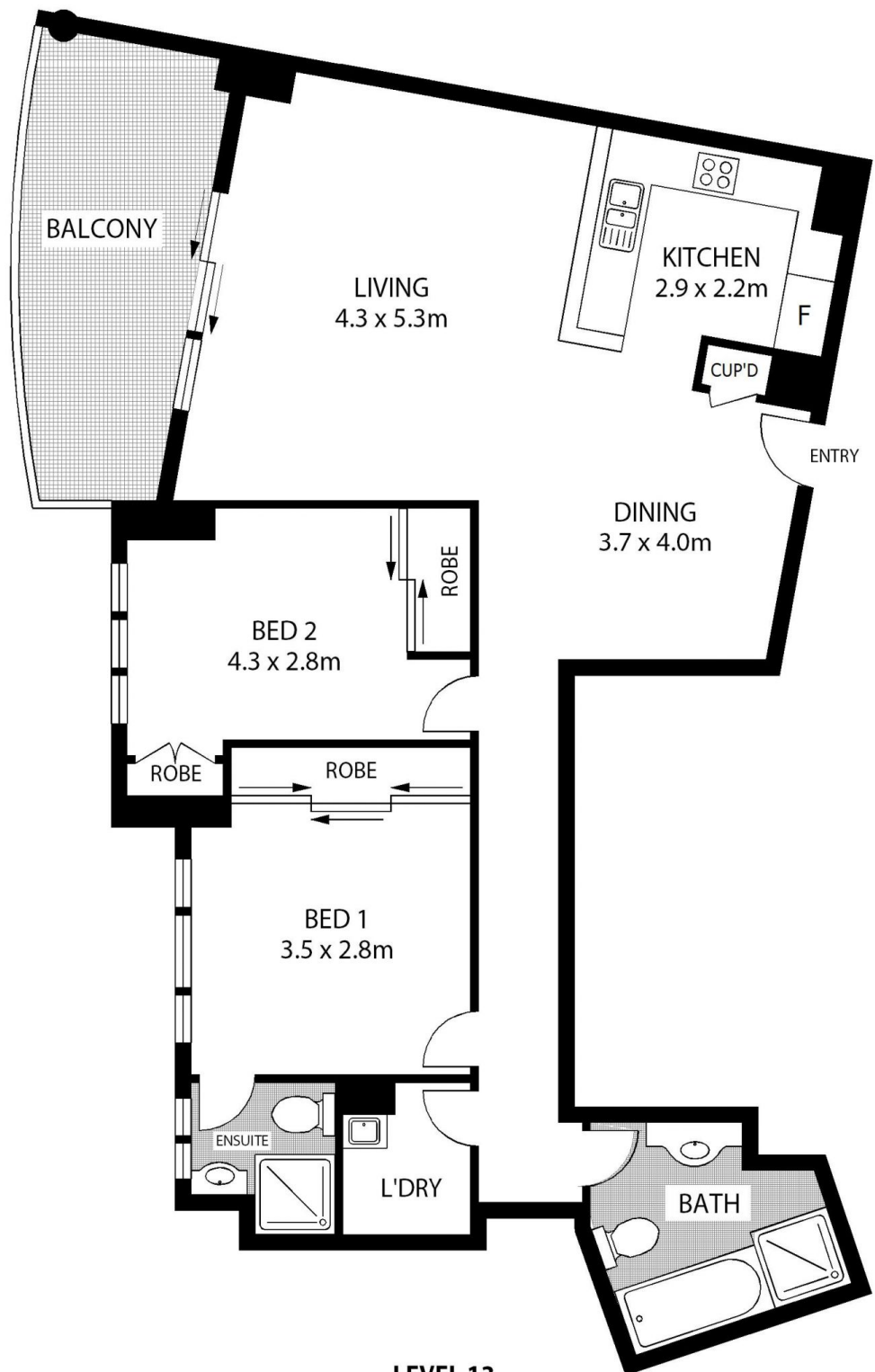
### Ian Qiu

📞 0447 696 425  
✉ ian@morton.com.au

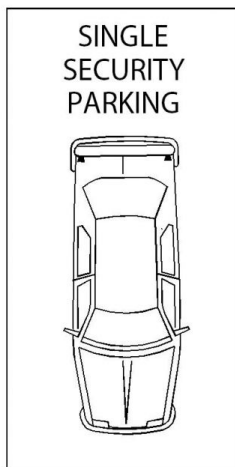
### Naomie Texier

📞 0439 247 710  
✉ naomie@morton.com.au

**morton.com.au**



**LEVEL 13**



**65/122 SAUNDERS STREET**

**PYRMONT**

SCAPE Floor Planning Disclaimer: This floor plan is conceptual only. It is provided for illustrative purposes only and should not be relied upon. We make no guarantee as to the correctness of this plan. All interested parties should make and rely on their own enquiries in determining the accuracy of the information contained in this floor plan.