



morton.

Pyrmont 2/15 Bowman Street

🛏 2 🚿 2 🚗 1

Discover a designer residence that exudes unparalleled prestige and distinction nestled within the coveted boutique building of "Silk." This oversized two bedroom plus study terrace-style apartment captures a sought after northerly aspect with glistening harbour and ANZAC bridge views. Boasting only 12 luxurious terraces, this home caters to discerning individuals who seek the convenience of apartment living without compromising on comfort.

- An intuitive plan that maximises the effortless flow of space
- Triple glazed doors and windows
- Flooded with natural northern sunshine throughout
- Immaculately presented with bespoke appointments
- Expansive entertaining areas open to a large, undercover terrace
- Generous master with ensuite, walk-in robes
- Superb CaesarStone gas kitchen, fitted with European appliances
- Security car space & separate storage within 25m walking distance from unit

morton.com.au

View

As advertised or by appointment

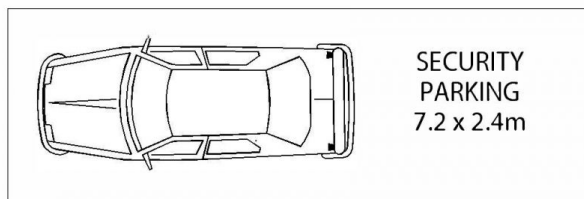
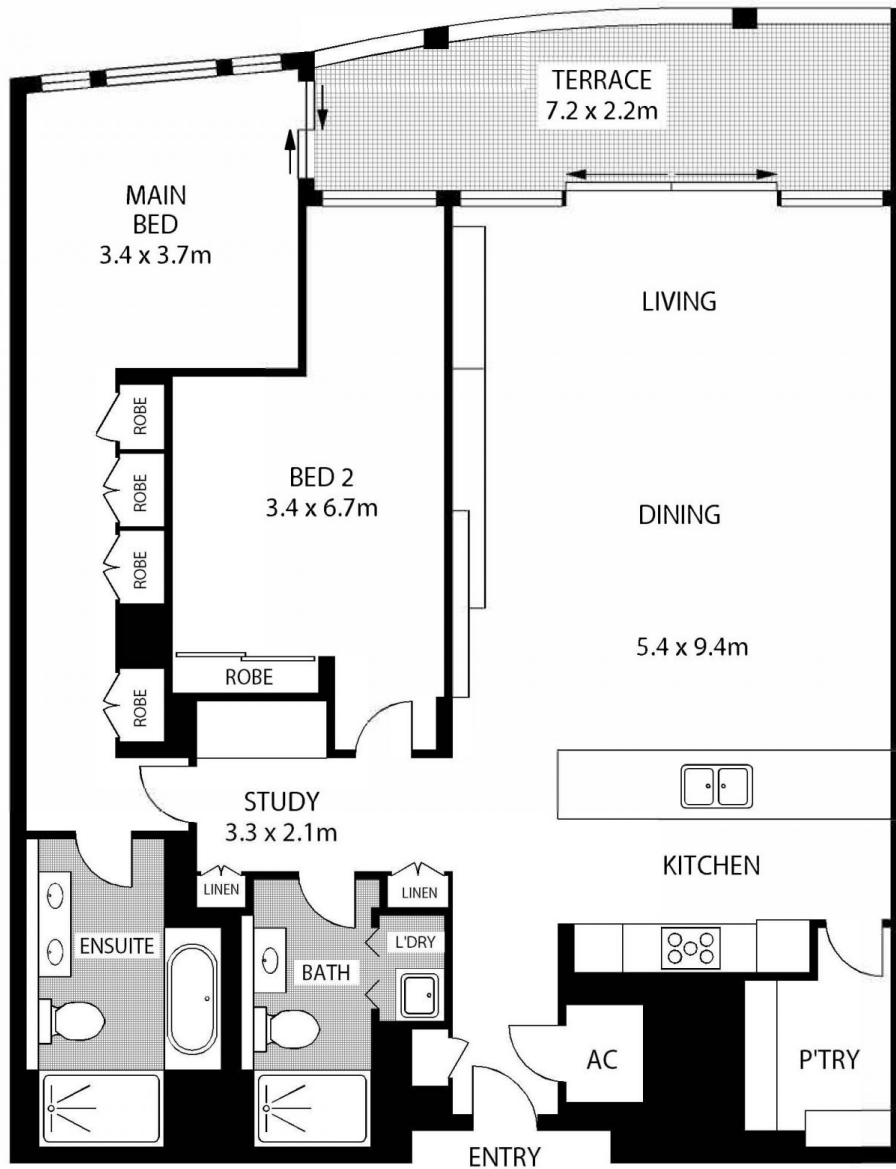
Agents

Ian Qiu

📞 0447 696 425
 ✉ ian@morton.com.au

Naomie Texier

📞 0439 247 710
 ✉ naomie@morton.com.au



B4



2/15 Bowman Street

Pymont

SCAPE Floor Planning Disclaimer: This floor plan is conceptual only. It is provided for illustrative purposes only and should not be relied upon. We make no guarantee as to the correctness of this plan. All interested parties should make and rely on their own enquiries in determining the accuracy of the information contained in this floor plan.