



morton.

Pyrmont 4/56 Pirrama Road

3 3 2

Imagine waking up to this every morning - explosive harbour and cityscape views that capture mesmerising Sydney scenes, and a deluxe residence that caters to all your lifestyle needs. The design of this stunning penthouse takes inspiration from its picturesque Sydney wharf harbourfront location and is perfectly conceived to provide a substantial dual level home that's dedicated to easy indoor-outdoor entertaining.

- Direct and private lift entrance to your own exclusive lobby
- Featuring an expansive 315sqm of in and outdoor living area
- Soaring double-height ceilings ensure an uplifting sense of space
- A private rooftop terrace that captures 360° views over the city
- Bright and breezy open plan design featuring Blackbutt flooring
- Seamless indoor-outdoor flow to a wide entertainment terrace
- High-end chef's Gaggenau kitchen includes a marble island bench

View

As advertised or by appointment

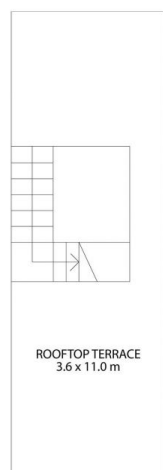
Agent

James Crow

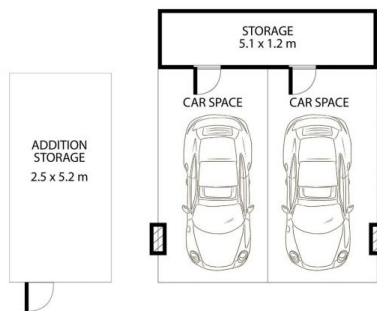
0410 593 057

james@morton.com.au

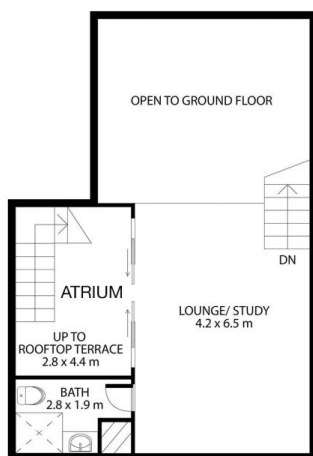
morton.com.au



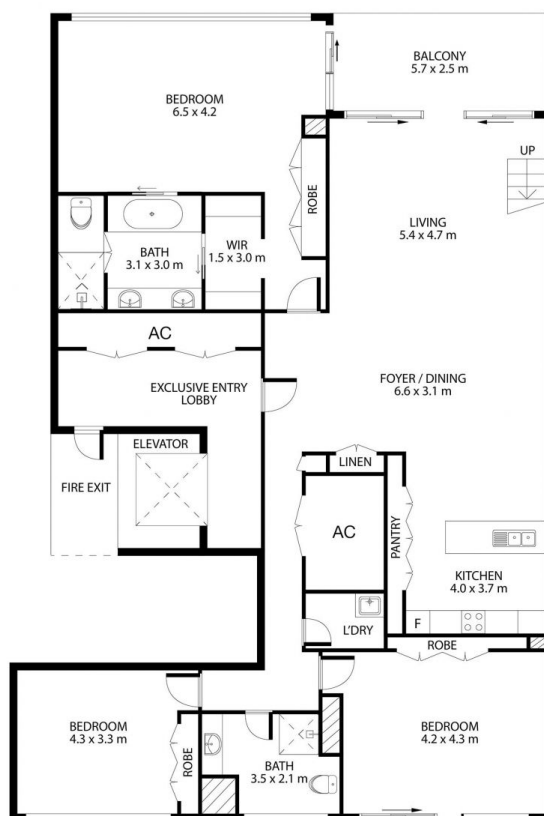
ROOFTOP TERRACE



GARAGE



LEVEL 6



FIFTH FLOOR

This floor plan including furniture, fixture measurements and dimensions are approximate and for illustrative purposes only.



4/56 Pirrama Road PYRMONT

morton.