

morton.

Glebe A501/2H Wentworth Park Road

 1  1

Welcome to "Mezzo," where classic heritage architecture meets stunning contemporary design. Nestled amidst a lush, green landscape, this apartment offers parkland views, providing the perfect blend of convenience, comfort, and luxury. Located in the vibrant heart of Glebe, this residence ensures you enjoy a premium lifestyle with everything at your fingertips. Sydney Fish Markets and Broadway Shopping Centre are just minutes away.

- Currently tenanted until January 2024 (\$535 per week)
- Only three apartments per floor and one common wall
- Corner situated apartment, access to rooftop garden on the same floor
- Sleek kitchen with stone bench tops, gas cooking, and dishwasher
- Queen-sized bedroom features built-in robes and offers access to balcony
- Combined living and dining area
- Modern bathroom, separate internal laundry
- Stay comfortable year-round with ducted air conditioning

morton.com.au

View

As advertised or by appointment

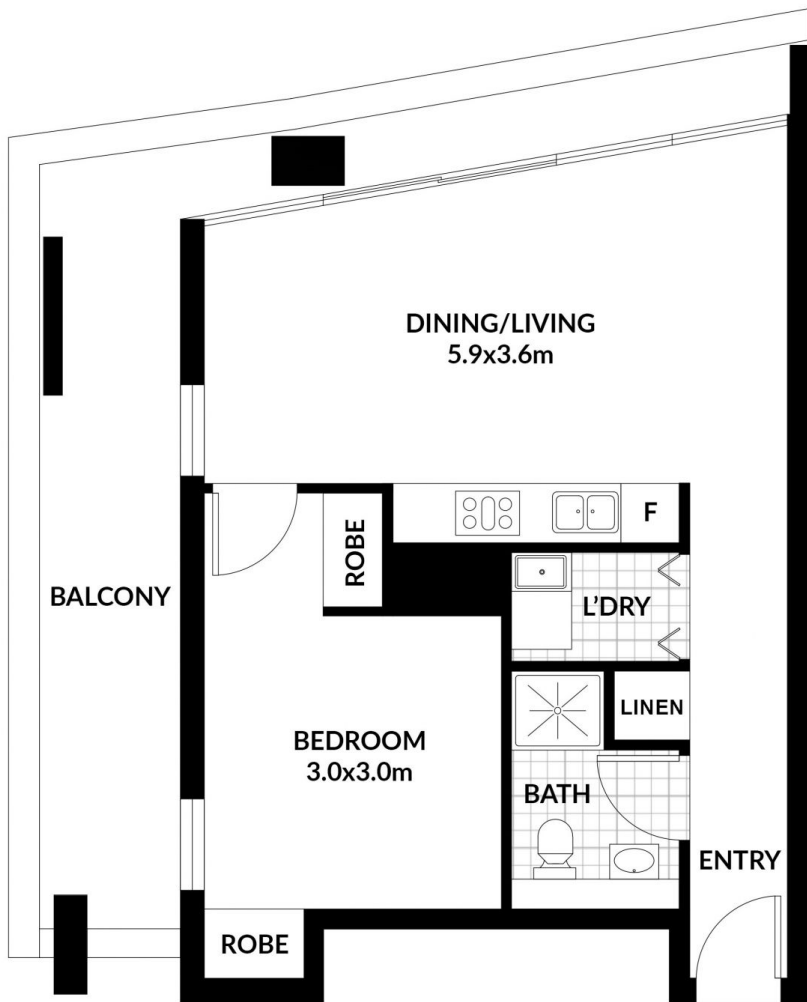
Agents

Ian Qiu

 0447 696 425
 ian@morton.com.au

Naomie Texier

 0439 247 710
 naomie@morton.com.au



STORAGE

1.6x1.7m

