



morton.

Pyrmont 502/1 Wattle Crescent



Occupying a premier position in 'Pier 99', one of Pyrmont's newest buildings, this exceptional residence defines affordable luxury living without compromise. Finished to the most exacting of standards and with a superior attention to detail, it is literally moments to the sparkling waters of Blackwattle Bay.

- Currently tenanted for \$550 per week (expiry January 2024)
- Open plan living + dining with timber flooring
- Double bedroom with built in robes, balcony
- Stylish gas kitchen with stone island bench top
- Miele appliances, dishwasher, internal laundry
- Designer bathroom, reverse cycle ducted air con
- Internal laundry, security intercom, storage cage

View

As advertised or by appointment

Agents

Ian Qiu

📞 0447 696 425

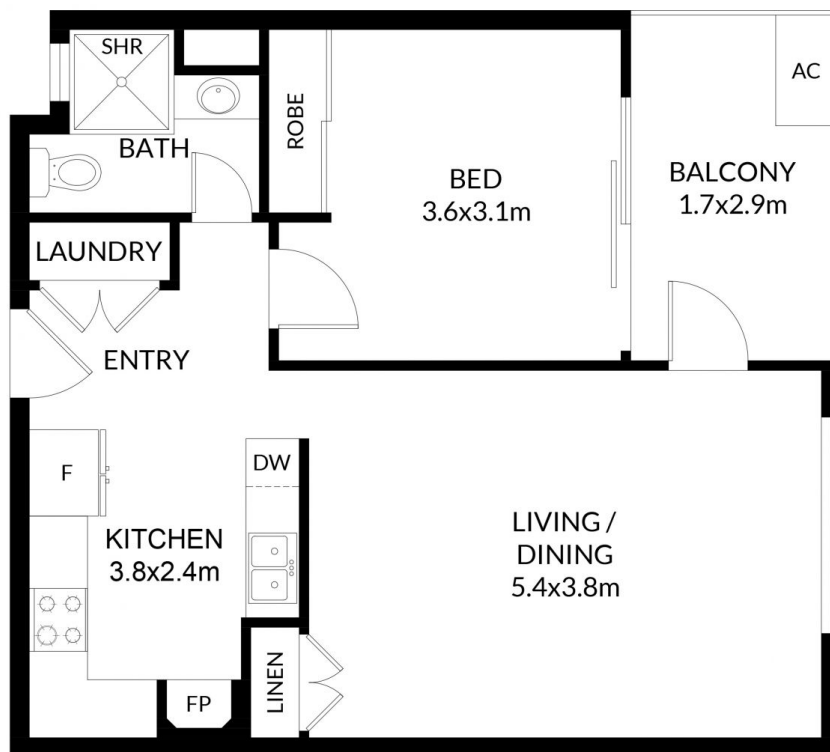
✉️ ian@morton.com.au

Naomie Texier

📞 0439 247 710

✉️ naomie@morton.com.au

morton.com.au



FLOOR PLAN



502/1 Wattle Cr,

Pymont

SCAPE Floor Planing Disclaimer: This floor plan is conceptual only. It is provided for illustrative purpose only and should not be relied upon. We make no guarantees to the correctness of this plan. All interested parties should make and rely on their own enquiries in determining the accuracy of the information contained in this floor plan.