



morton.

Pymont 91/209 Harris Street

1 1 1

Bright and inviting with a desirable north facing aspect this immaculate city fringe residence enjoys rare alternate views stretching from Barangaroo to the Anzac Bridge and Blackwattle Bay. With an easy functionality, a unique opportunity awaits for affordable modern living in the heart of Pymont's village centre and all that the city fringe has to offer.

- Recently updated with quality contemporary finishes
- Bright outlook with views spanning the city skyline
- Cleverly configured, open plan lounge and dining areas
- Private balcony with access from living and bedroom
- Stylish kitchen, Smeg gas appliances and granite benches
- Master with built-ins
- Prized northern aspect with all day sunlight
- Dual shear and block out blinds
- Quality carpet, air conditioning, hi-tech building security
- Well located security car space, ample visitor parking
- On site building management, rooftop terrace and gym
- Environmentally and green energy focused committee

View

As advertised or by appointment

Agent

James Crow

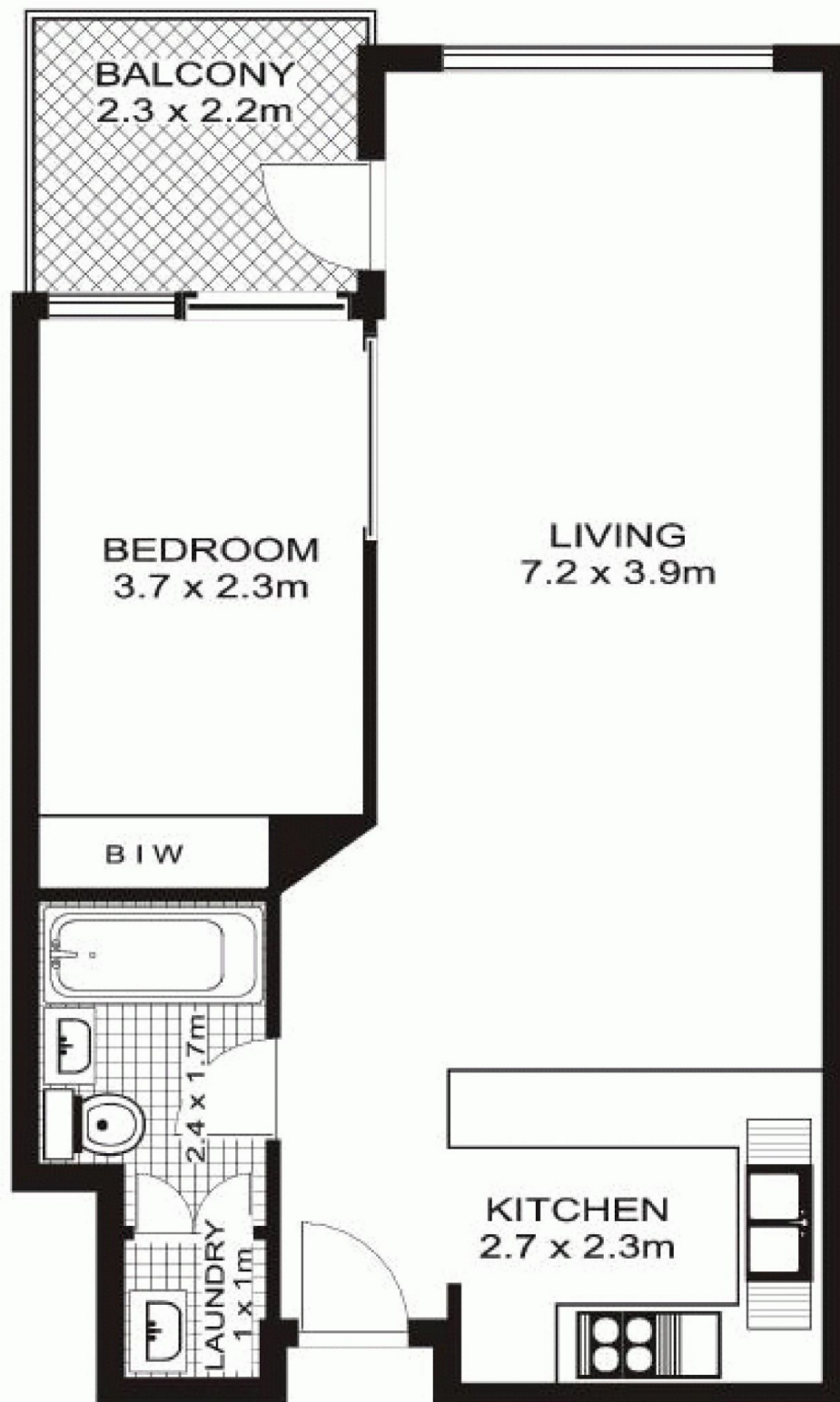
0410 593 057

james@morton.com.au

morton.com.au

91/209 Harris Street,
PYRMONT

SCALE 1m



* note
all measurements are approximate only.
Plan is provided only as an indication of layout.