



morton.

Penrith 2/40-42 Barber Avenue

🛏 2 🚿 2 🚗 1

Rivoli is an upmarket development of 43 units with a clear focus on quality finishes that are timeless and exude sophistication. Located in the hub of Penrith in-between Penrith and Kingswood train stations, enjoying breathtaking views of the picturesque Blue Mountains.

- Entertainers kitchen with four-burner gas cooktop and island bench
- SMEG stainless steel appliances, stylish pendant light fixtures
- Caesarstone benchtops, soft close cupboards, glass splash back
- Split system air conditioning to living room, blinds throughout
- Generous sized courtyard with ample space for entertaining
- Good-sized bathroom with bathtub and shower
- Wool-blend carpeted bedrooms, mirrored built-in robes, master with ensuite
- Internal laundry with Fisher & Paykel dryer

View

As advertised or by appointment

Agents

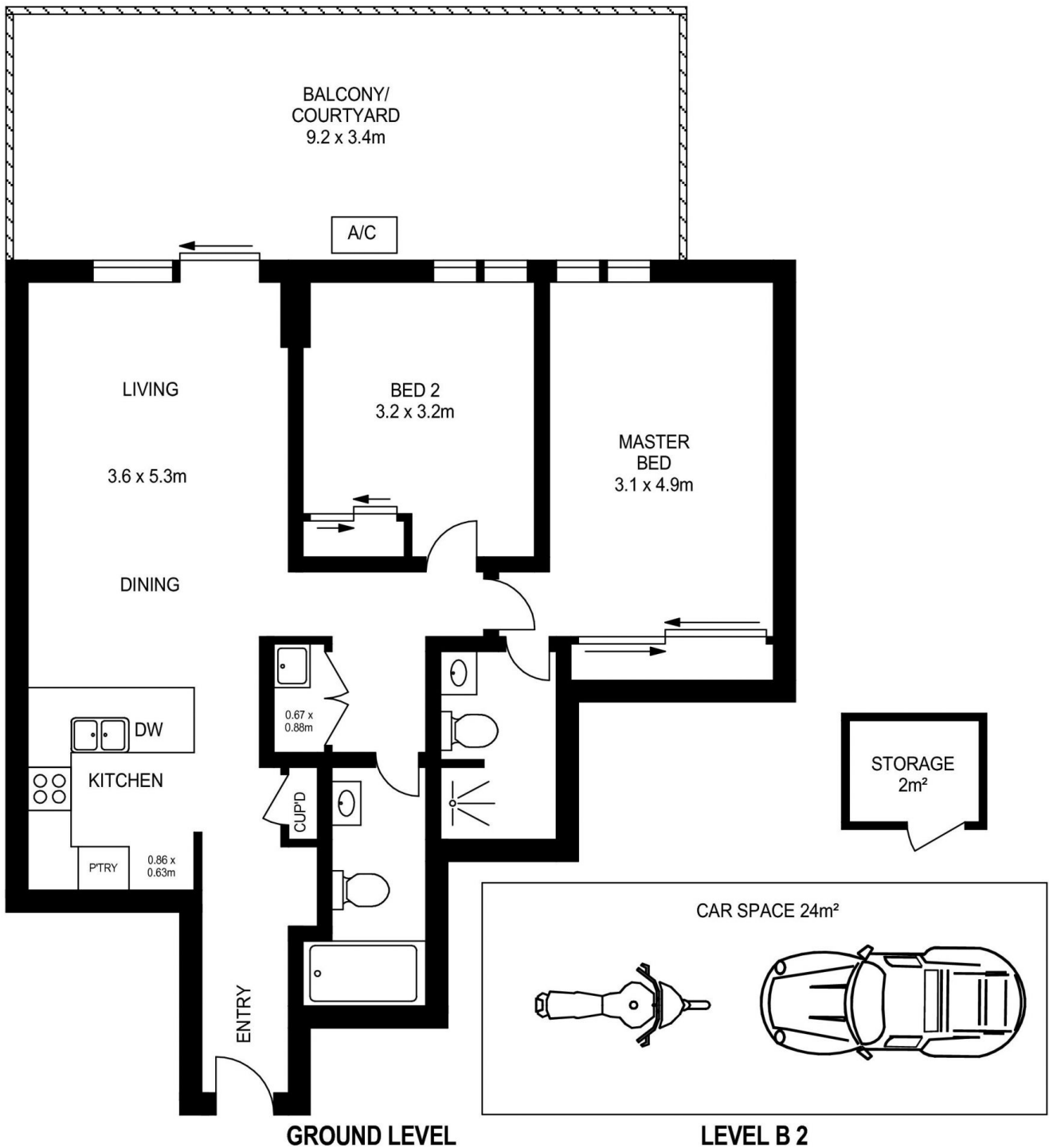
David Lipman

📞 0409 663 535
✉ david@morton.com.au

SJ Singh

📞 0417 085 519
✉ sj.singh@morton.com.au

morton.com.au



2/40-42 BARBER AVENUE, PENRITH

APPROX. INT. AREA : 79m²
 APPROX. EXT. AREA : 31m²
 TOTAL AREA INCLUDING CAR SPACE AND STORAGE : 136m²



www.assetphotographers.com.au

Please note these measurements are approximate only. The plans is intended as a rough guide for illustrative purpose. It is not warranted or guaranteed to be correct nor it is part of the sale or rental contract