



morton.

Wentworth Point 322/22 Baywater Drive

 2  2  1

The sophisticated design of this light-filled apartment offers a stylish environment with a pleasant and elevated aspect over The Waterfront community. It provides a high-quality living space that's impeccably finished throughout and features generous proportions with a great feeling of space and privacy, plus it's exceptionally well-positioned close to all the amenities that make Wentworth Point such a popular lifestyle destination.

- Flowing, bright single-level design with excellent air crossflow
- Large open plan layout with generous living and dining spaces
- A wide north-facing terrace plus a second balcony at the rear
- Quality gas kitchen with dishwasher and stone benchtops
- The great-sized bedrooms both open onto a private balcony
- Air-conditioning, lift access, intercom and a security car space
- Option for Pulse Club membership with pools, tennis and gym



morton.com.au

View


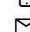
As advertised or by appointment

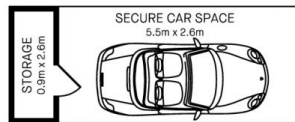
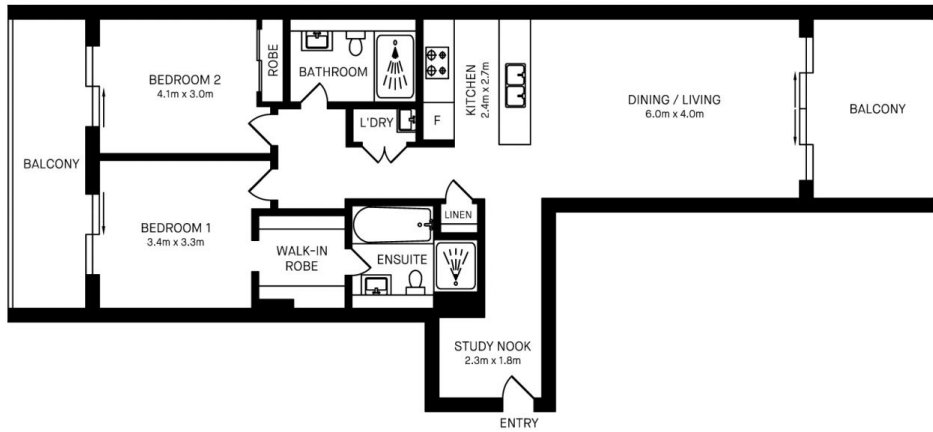
Agents

Dylan Choe

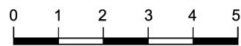
 0416 932 977
 dylanchoe@morton.com.au

Akanksha Chaudhari

 0447 201 786
 akanksha@morton.com.au



322/22 BAYWATER DRIVE, WENTWORTH POINT



Please note these measurements are approximate only. The plans are intended as a rough guide for illustrative purpose. It is not warranted or guaranteed to be correct nor is it part of the sale or rental contract.

