



# morton.

**Ermington** 103/1 Allambie Street

 2  2  1

Stylishly understated and beautifully crafted with absolutely nothing left to want, this superb residence defines effortless riverside living without compromise. Well appointed throughout with the finest of finishes and designed for a low maintenance contemporary lifestyle, this stunning riverside apartment is the perfect first home or addition to an investment portfolio.



- Opening to embrace the natural light of a northern aspect
- Welcoming open lounge and dining, spacious winter garden
- Double bedrooms, built-ins, master has an ensuite, walk-in
- Deluxe kitchen complete with stone benches, gas appliances
- Sleek bathrooms, air conditioning, tiled floors, high ceilings
- European laundry, separate storage cage and secure parking
- The perfect lifestyle apartment in a highly prized community

### View



As advertised or by appointment

### Agents

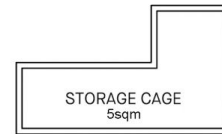
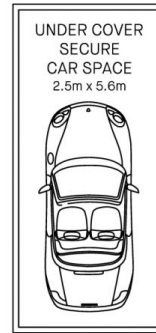
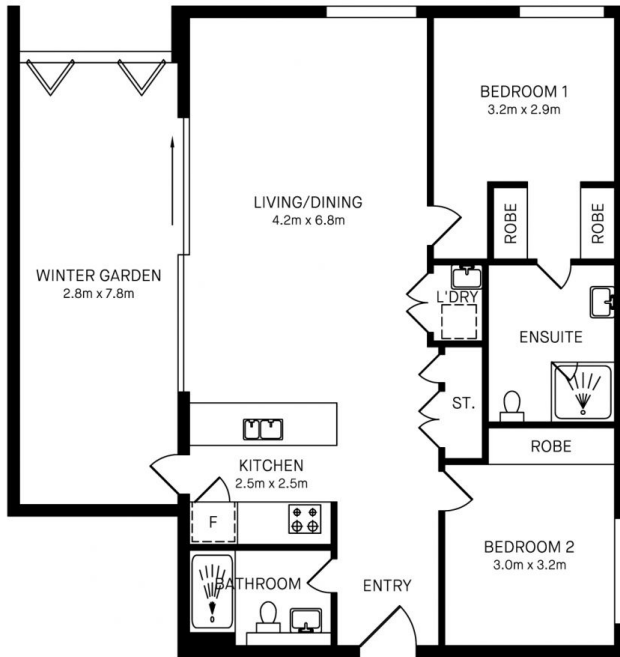
#### Dylan Choe

 0416 932 977  
 [dylanchoe@morton.com.au](mailto:dylanchoe@morton.com.au)

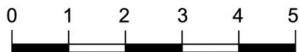
#### Akanksha Chaudhari

 0447 201 786  
 [akanksha@morton.com.au](mailto:akanksha@morton.com.au)

[morton.com.au](https://morton.com.au)



103/1 ALLAMBIE STREET, ERMINGTON



Please note these measurements are approximate only. The plans is intended as a rough guide for illustrative purpose. It is not warranted or guaranteed to be correct nor it is part of the sale or rental contract.

