



morton.

Wentworth Point 142/7 Baywater Drive



The Waterfront is located moments to Sydney Olympic Park main venues, train station, Bicentennial Park and Millennium Parklands. Located in Palermo, this is your opportunity to move into a loft style one bedroom apartment, only a short stroll from The Promenade and The Piazza.

- Located on level one
- Combined living and dining room
- Reverse cycle air conditioning in lounge
- Full size kitchen with stainless steel appliances
- Gas cooking and lots of cupboard space
- Great size bedrooms with huge built-in wardrobes
- Laundry room with clothes dryer
- Secure undercover one car space and storage cage
- NBN and Foxtel outlets ready for account connection
- On-site building manager.
- Palermo building includes exclusive pool and gym

View

As advertised or by appointment

Agent

Nevena Petrovic

📞 0428 835 910

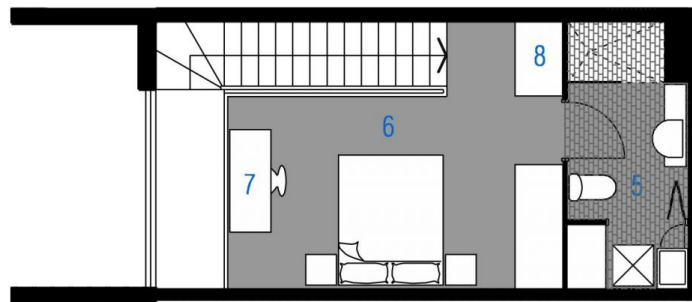
✉️ nevena@morton.com.au

morton.com.au

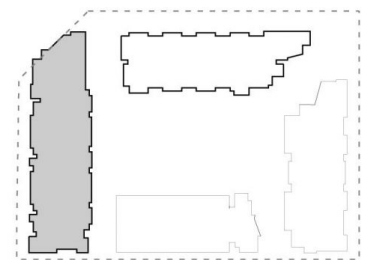
- ENTRY | 1
- LIVING | 2
- DINING | 3
- KITCHEN | 4
- BATHROOM | 5
- BEDROOM | 6
- STUDY | 7
- STORAGE | 8
- TERRACE | 9



LEVEL 01



LEVEL 02



PALERMO

UNIT: **142**

TYPE: 1 Bedroom

UNIT AREA: 53.6 sqm

OUTDOOR AREA: 21.8 sqm

SCALE: 1:100

PAYCE

Disclaimer: All layouts are indicative only, and subject to change.

