



morton.

Sydney Olympic Park 2006/11 Australia Avenue

🛏 2 🚿 2 🚗 1

SOLD FOR BUILDING RECORD PRICE IN JUST 16 DAYS!

Poised for spectacular panoramas from the 20th floor of the acclaimed Australia Towers building, this deluxe apartment offers a premium urban living experience in the heart of Sydney's vibrant Olympic Park precinct. It combines bright breezy interiors, modern finishes and breathtaking views to deliver a quality home or investment prospect of absolute quality.

- Panoramic views over the city, Harbour Bridge and Parramatta River
- A prime north aspect that floods the interior spaces with sunlight
- Floor-to-ceiling walls of glass maximise the sensational outlook
- A great-sized balcony for entertaining and enjoying the views
- Two bedrooms with built-ins plus a separate study/media room
- Fully integrated gas kitchen with stone benchtops and dishwasher

morton.com.au

View

As advertised or by appointment

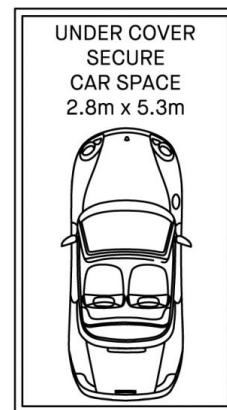
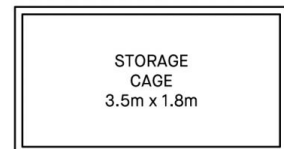
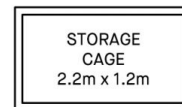
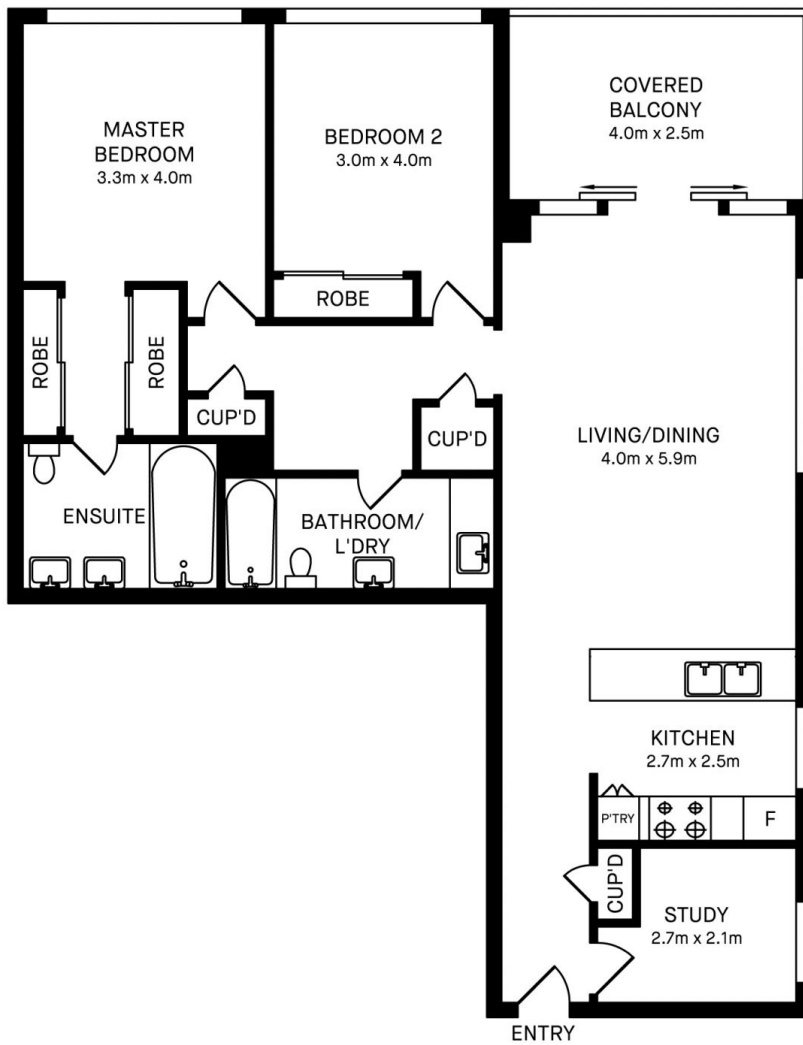
Agents

Dylan Choe

📞 0416 932 977
✉ dylanchoe@morton.com.au

Vivian Zhang

📞 0447 964 200
✉ vivian@morton.com.au



2006/11 Australia Avenue, Sydney Olympic Park



Please note these measurements are approximate only. The plans is intended as a rough guide for illustrative purpose. It is not warranted or guaranteed to be correct nor it is part of the sale or rental contract.

