



morton.

Riverwood 716/5 Vermont Crescent

 2  2  1

Discover the epitome of lakeside living with this stunning seventh floor apartment. Nestled in a sought-after neighbourhood, this property's bright, sun-filled interiors and panoramic views across the lake and park, offer the perfect combination of convenience and comfort.

Property features:



- Spacious bedrooms, both with built-ins
- Well-appointed kitchen, modern appliances and ample storage
- Open plan living and dining flows onto balcony with views
- Modern bathrooms featuring sleek fixtures and finishes
- Abundant natural light and sun-filled interiors

View



As advertised or by appointment

Agents

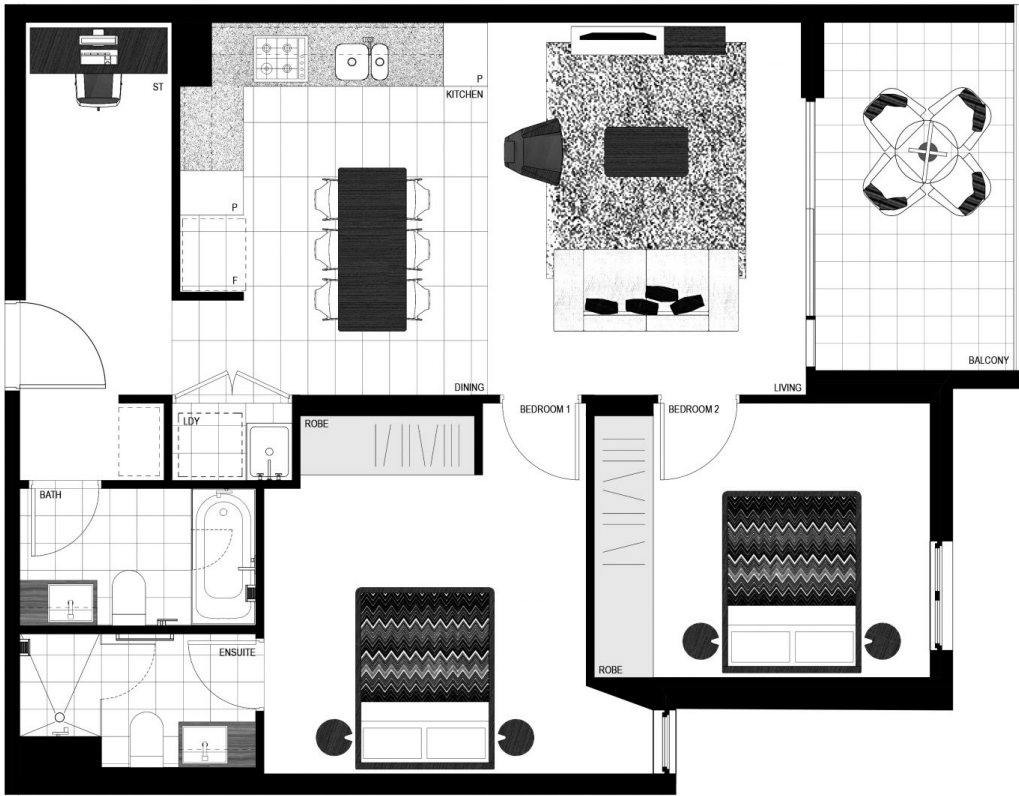
Nada Fayad

 0408 376 995
 nadaf@morton.com.au

Calvin Chan

 0406 888 028
 calvin@morton.com.au

morton.com.au



LEVEL 7

| | |
|----------|------------------|
| Internal | 73m ² |
| External | 8m ² |
| Total | 81m ² |

LAKEVIEW

