



# morton.

**Haymarket** 166/420-426 Pitt Street



This inviting apartment showcases a remarkable blend of exceptional proportions and a thoughtfully designed floorplan, perfectly embodying the essence of contemporary city living. Meticulously maintained and presented with immaculate attention to detail, this residence occupies a coveted position within a highly sought-after and exclusive community.

- Floor-to-ceiling windows offer an uninterrupted panorama of the breathtaking city skyline and beyond, creating an open and airy ambiance that effortlessly blends indoor and outdoor living.
- Winter balcony, offering private views that stretch across the skyline, providing a tranquil retreat within the bustling cityscape
- The well-proportioned master bedroom offers ample storage space while maintaining a sleek and uncluttered aesthetic
- Modern CaesarStone kitchen equipped with stainless gas appliances, combining style and functionality
- Air conditioning ensures year-round comfort, while the onsite building manager provides convenience and peace of mind

[morton.com.au](https://morton.com.au)

### View

As advertised or by appointment

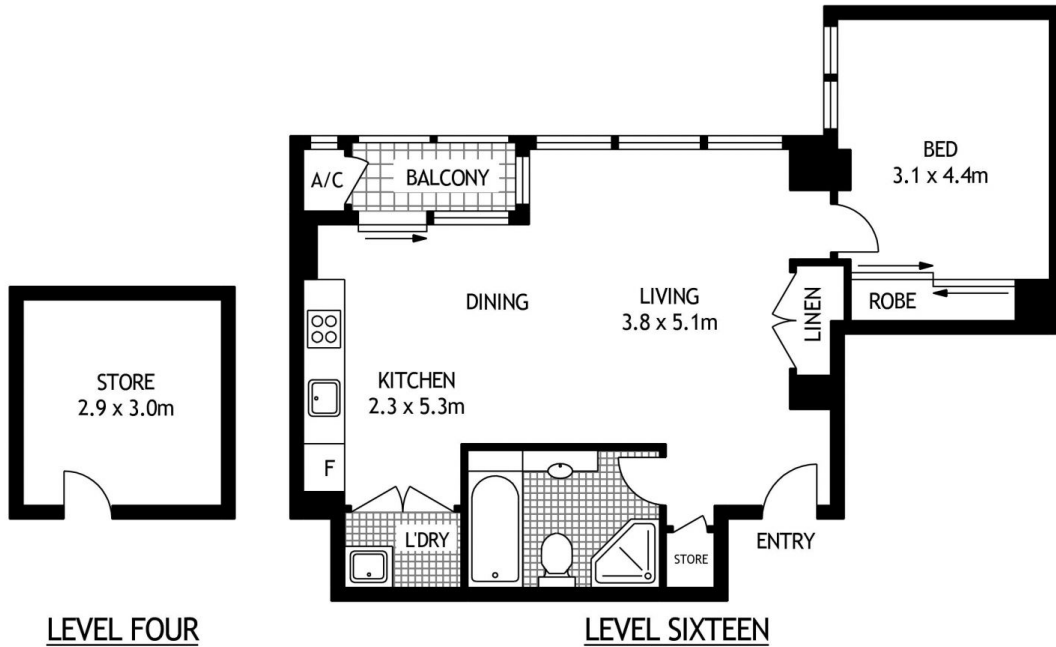
### Agents

#### Ettiene West

- 📞 0410 593 749
- ✉️ [ettiene@morton.com.au](mailto:ettiene@morton.com.au)

#### Arman Zounuzy

- 📞 0410 539 793
- ✉️ [arman.zounuzy@morton.com.au](mailto:arman.zounuzy@morton.com.au)



166/420 PITT STREET

SYDNEY

SCAPE Floor Planing Disclaimer: This floor plan is conceptual only, it is provided for illustrative purposes only and should not be relied upon. We make no guarantees to the correctness of this plan. All interested parties should make and rely on their own enquiries in determining the accuracy of the information contained in this floor plan.