



# morton.

**Pyrmont** 206/8 Wharf Crescent


 3  2  2

### View

As advertised or by appointment

### Agent

**Christina Tsousta**

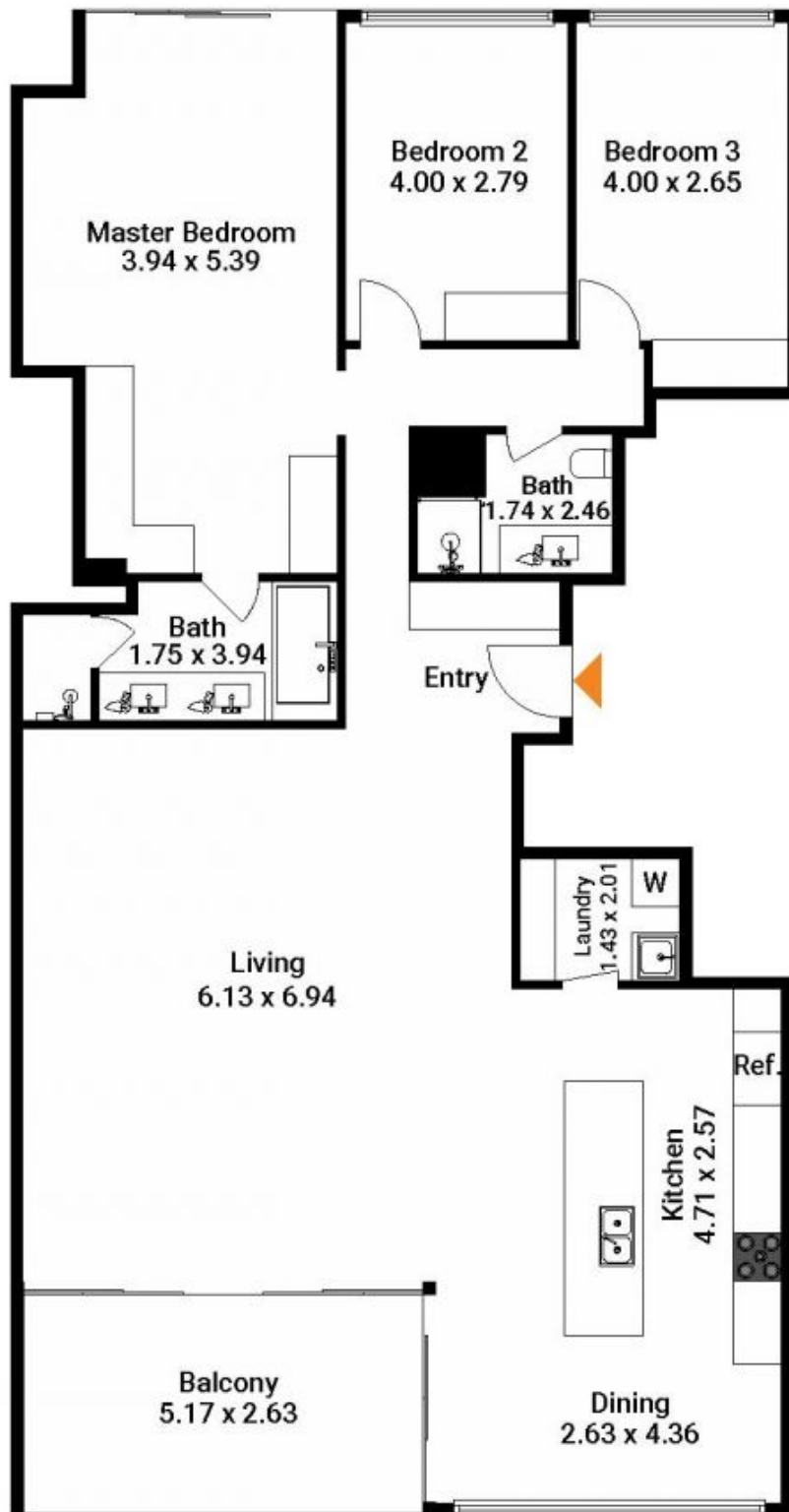
 0408 577 427

 christina.tsousta@morton.com.au

Proudly set in a prestigious harbourside position within the ultra exclusive 'Saunders Wharf' community, this is a residence of unrivalled refinement, quality and sophistication. Dominated by iconic views across the harbour to the soaring city skyline and Harbour Bridge, this is a property of the highest standard.

- Expansive entertaining with separate lounge and dining
- Generous master, ensuite with bathtub and built-ins
- Sleek stone kitchen, gas appliances, soft-touch cabinetry
- Sleek designer bathrooms, frameless glass shower
- Secure double garage complete with adjoining storage area
- Ducted air conditioning, video intercom
- Ultra exclusive harbour front cul-de-sac location

[morton.com.au](https://www.morton.com.au)



**Total SQM On Title : 166 SQM**

The floor plan is not to scale; measurements are indicative and in metres. Exterior elements are not in position. Plans should not be relied on. Interested parties should make and rely on their own enquiries.



The floor plan is not to scale; measurements are indicative and in metres. All features included in this 3D plan are for inspiration purposes only. This is not an exact replica of the property or the position of exterior elements. Plans should not be relied on. Interested parties should make and rely on their own enquiries.

Produced by **DIAKRIT**