



morton.

Paddington 15/13 Oatley Road

 2  1  1

Welcome to this sun-drenched and spacious top level apartment located at Paddington Central. Embracing a sought after North facing aspect with 3 balconies, this residence offers a perfect blend of space, style and quality from a superb walk to everywhere location. Overlooking the picturesque sunken gardens of Paddington Reservoir Gardens with excellent public transport at the door. This property is sure to captivate with its enticing features.

- Sun filled, open plan living with Northerly outlook
- Seamless indoor/outdoor flow with two balconies off living area
- Quality stone kitchen with Gaggenau gas cooktop and island
- One of only four apartments on this level with only one common wall
- Two upper level bedrooms with oversized main bedroom and third balcony
- Bathroom with bathtub, separate laundry and downstairs powder room
- Reverse cycle ducted air conditioning/heating, jarrah timber



morton.com.au

View



As advertised or by appointment

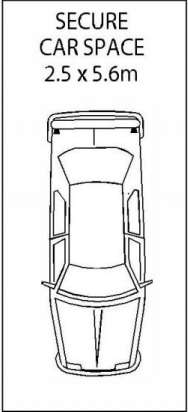
Agents

Ettiene West

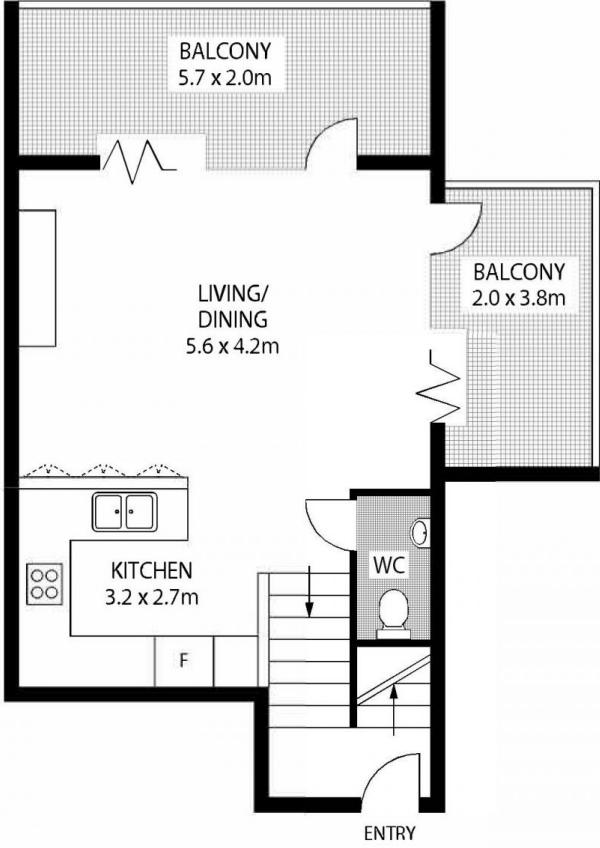
 0410 593 749
 ettiene@morton.com.au

Arman Zounuzy

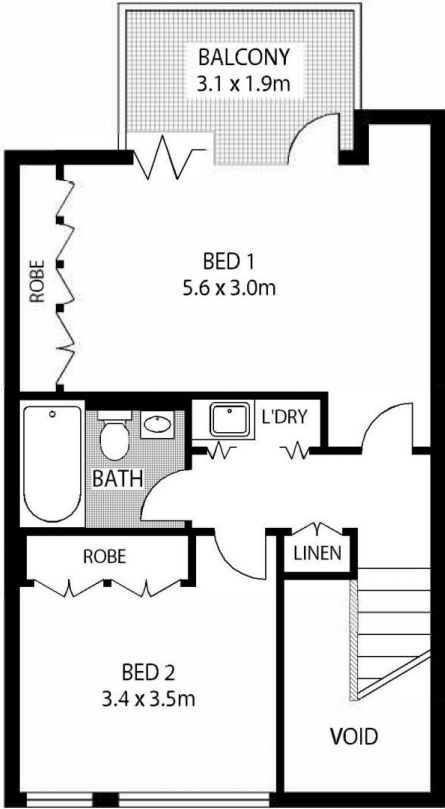
 0410 539 793
 arman.zounuzy@morton.com.au



LEVEL 1



LEVEL 5



UPPER LEVEL

