



morton.

Wentworth Point 214/3 Stromboli Strait

🛏 2 🚿 2 🚗 2

Offering all the advantages of townhouse-style living, this dual-level apartment is well-proportioned throughout and set in a great lifestyle location with The Waterfront precinct's vibrant cafes, ferry wharf and shopping hub close by. It brings together fresh interiors, private outdoor spaces and a high set position to make it an excellent low-maintenance home with elevated views over the complex swimming pool and landscaped grounds.

A generous two-level design featuring 151 sqm of living space
 Light and airy interiors feature an open living and dining area
 A choice of four balconies, each enjoying an elevated outlook
 Two upstairs bedrooms both have built-ins and a private balcony
 Sleek modern kitchen equipped with dishwasher and gas cooktop
 Lift access to two security car spaces in the basement car park
 Air-conditioning, intercom entry and polished timber floors
 Residents access to indoor/outdoor pools, gym and tennis

View

As advertised or by appointment

Agents

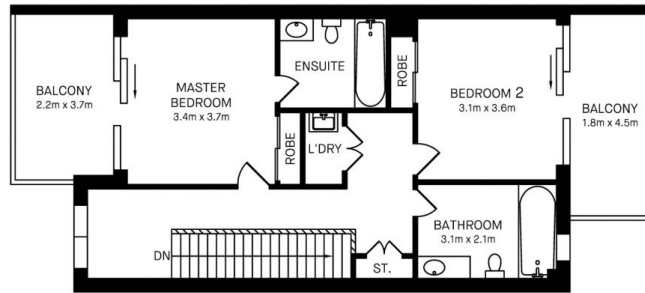
Dylan Choe

📞 0416 932 977
 ✉ dylanchoe@morton.com.au

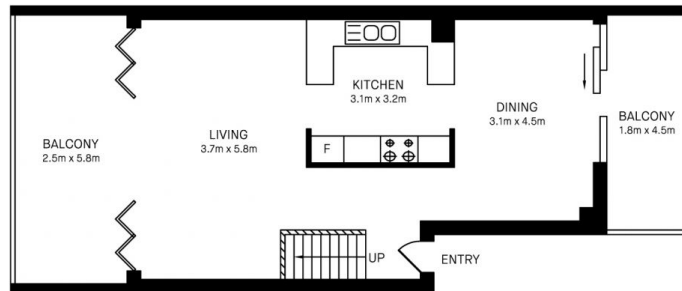
Akanksha Chaudhari

📞 0447 201 786
 ✉ akanksha@morton.com.au

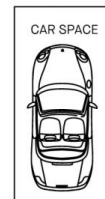
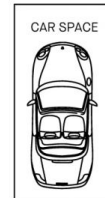
morton.com.au



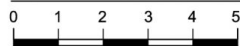
UPPER LEVEL



LOWER LEVEL



214/3 Stromboli Straight, Wentworth Point



Please note these measurements are approximate only. The plans are intended as a rough guide for illustrative purpose. It is not warranted or guaranteed to be correct nor it is part of the sale or rental contract.



morton.