



morton.

Ashfield 104/380 Liverpool Road

 2  1  1

This property is the definition of luxurious contemporary living set within close proximity to the vibrant Ashfield city centre. This flawless light filled apartment is the epitome of designer style. A premier opportunity for the couple or investor that has all the amenities just a stroll from the front door.



- Exclusive offering finished to the highest standard
- Two large double bedrooms
- Impeccably appointed for low maintenance living
- Chic CaesarStone kitchen with stainless gas appliances
- Inviting open plan lounge and dining space
- Entertainer's balcony/ Winter Garden
- Internal laundry, ducted air conditioning
- Secure car space
- Storage Cage

View



As advertised or by appointment

Agents

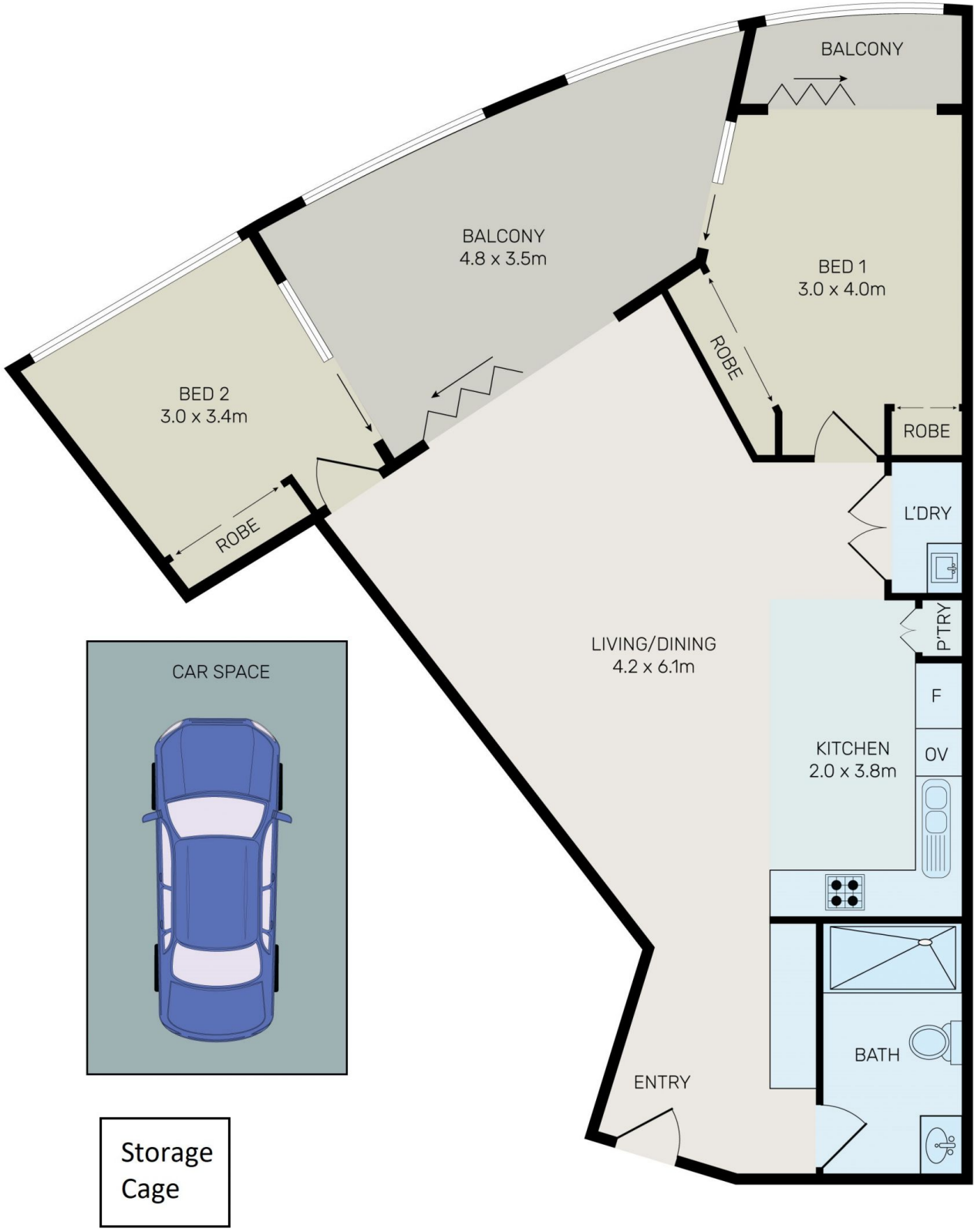
Calvin Chan

 0406 888 028
 calvin@morton.com.au

Jackson Figueiras

 0448 764 345
 jackson@morton.com.au

morton.com.au



All information contained herein is gathered from all sources we believe to be reliable. However we cannot guarantee its accuracy and interested parties should rely on their own enquiries.



104/380 Liverpool Road, Ashfield