



# morton.

**Wentworth Point** 1312/2 Waterways Street

2 1 1

Offering the perfect executive lifestyle package, this two-bedroom residence's light-filled spaces and easy low-maintenance design are enhanced by an elevated position with fantastic district views up the Parramatta River. Style, light and quality features throughout this modern home that's situated high in the sought-after Zen tower and on the doorstep of Wentworth Point's vibrant cafe, dining and transport hub.

- 13th floor position with a stunning elevated outlook
- Expansive views that spread over parklands and skyline
- Floor-to-ceiling walls of glass maximise light throughout
- Bright open design includes an enclosed wintergarden
- Quality modern kitchen with sleek gas fittings and dishwasher
- Good-sized double bedrooms and a sleek modern bathroom
- Security basement car space plus lock-up storage cage
- Split air-conditioning, video intercom and lift access

## View

As advertised or by appointment

## Agents

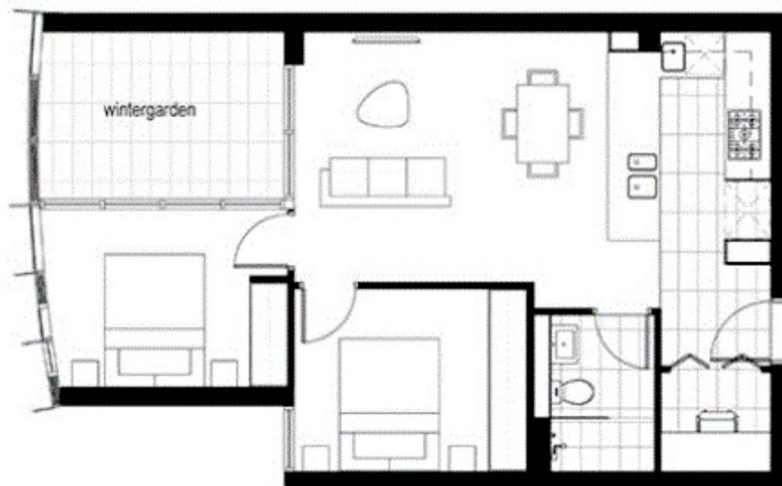
### Dylan Choe

0416 932 977  
dylanchoe@morton.com.au

### Vivian Zhang

0447 964 200  
vivian@morton.com.au

**morton.com.au**



0 1 2 4m



Disclaimer: The particulars are set out as a general outline for the guidance of intending purchasers and do not constitute an offer or contract. Strata Area subject to final survey. Area includes balcony, courtyard and wintergarden where applicable. It excludes car spaces and external storage spaces. All measurements are approximate only, and may vary. "Winter garden", where shown on plan, is an external light structure. Strata area is subject to final design and may change. All descriptions, dimensions, references to conditions and necessary particulars for contract other details are given in good faith and are intended to be correct, but any intending purchasers should not rely on them as representations or facts, but must satisfy themselves by inspection or otherwise as to the correctness of each fact, and where necessary seek advice. No third party, agent or their agents has any authority to make or give any representations or warranty in relation to this property.



13.05.2014



Z·E·N

GOLF STREET OFFICE  
WENTWORTH POINT  
PACIFIC

B1-412	B1-1312
B1-512	B1-1412
B1-612	B1-1512
B1-712	B1-1612
B1-812	B1-1712
B1-912	B1-1812
B1-1012	B1-1912
B1-1112	B1-2012
B1-1212	

WINTERGARDEN  
STRATA AREA 69m<sup>2</sup>