



morton.

Surry Hills 1029/20 Pelican Street



Discover the epitome of contemporary urban living within the prestigious Monument building, where panoramic harbour and district views greet you at every turn. A remarkable opportunity awaits to own a slice of this coveted complex in a chic one-bedroom plus study apartment, where sophistication and comfort converge seamlessly.

- Generously proportioned living and dining area, including a study
- Spacious bedroom with built-in wardrobe; designer bathroom
- North-oriented entertainer's balcony accessed from all rooms
- Captivating harbour and Sydney Opera House views
- Air-conditioning, laundry and lift level access with video intercom
- Secure basement parking; concierge; lift level access
- Facilities: heated lap pool, manicured gardens and health club
- Esteemed community; attractive strata levy; pet friendly building
- 5 minute walk to Hyde Park, city CBD and Museum

morton.com.au

View

As advertised or by appointment

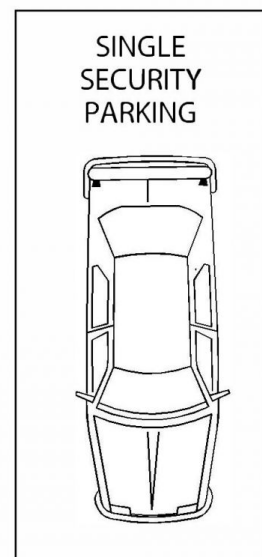
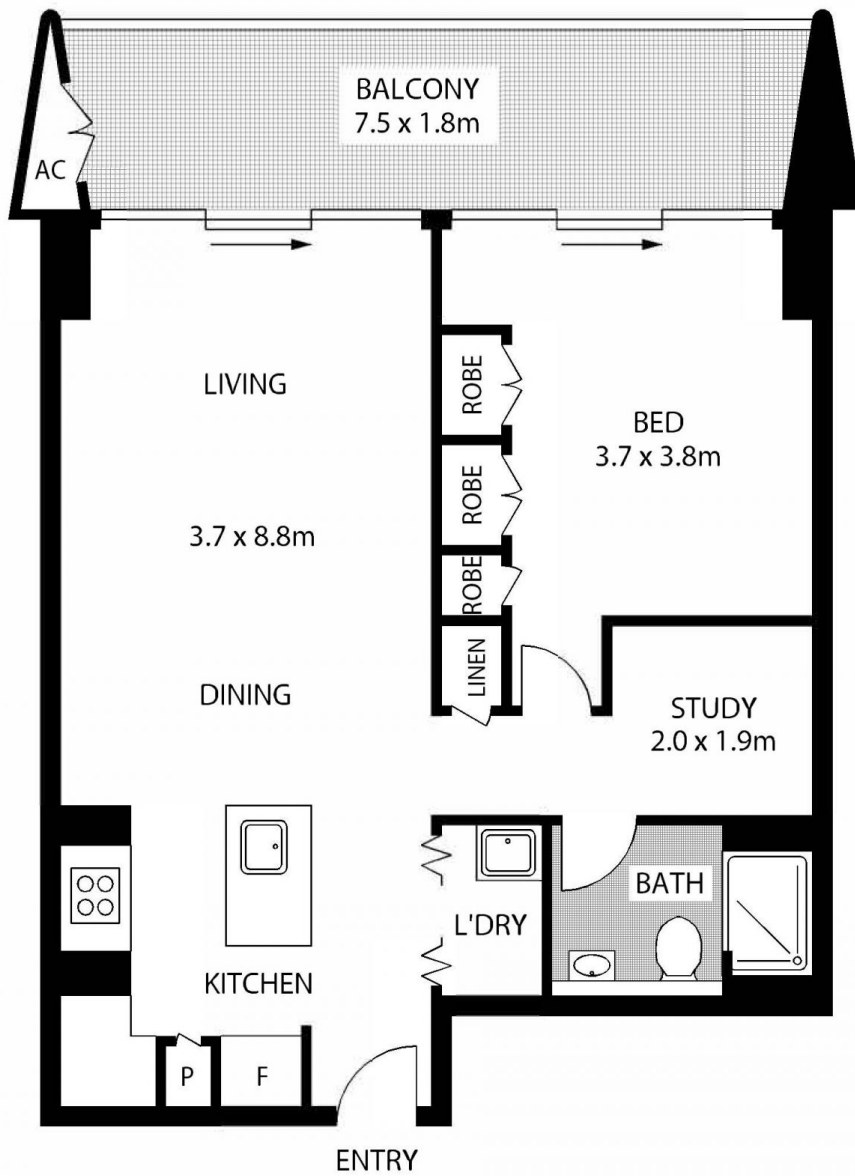
Agents

Ettiene West

📞 0410 593 749
✉️ ettiene@morton.com.au

Arman Zounuzy

📞 0410 539 793
✉️ arman.zounuzy@morton.com.au



LEVEL 10



1029/20 PELICAN STREET

SURRY HILLS

SCAPE Floor Planning Disclaimer: This floor plan is conceptual only. It is provided for illustrative purposes only and should not be relied upon. We make no guarantee as to the correctness of this plan. All interested parties should make and rely on their own enquiries in determining the accuracy of the information contained in this floor plan.