



morton.

Wentworth Point 407/6 Nuvolari Place

2 2 1

Combining modern style and functional design, this well-proportioned executive residence presents impeccably in its exclusive address within The Waterfront's Palermo building. It is high in space and quality plus it provides a very user-friendly home with a layout perfect for today's way of life, and a location that provides immediate access to Wentworth Point's lifestyle amenities and exceptional resort facilities.

- Smartly refreshed throughout with new paint and carpeting
- A generous easycare floorplan with a bright open design
- Wide northeast-facing terrace and elevated area outlooks
- Two bright bedrooms plus a separate study/media space
- Both bedrooms have large built-ins, the main has an ensuite
- Quality gas kitchen, full main bathroom and internal laundry
- Security car space and lock-up storage cage with easy lift access
- Exclusive access to the Palermo's swimming pool and gymnasium
- Option to join the Pulse Club pool, steam room and tennis

View

As advertised or by appointment

Agents

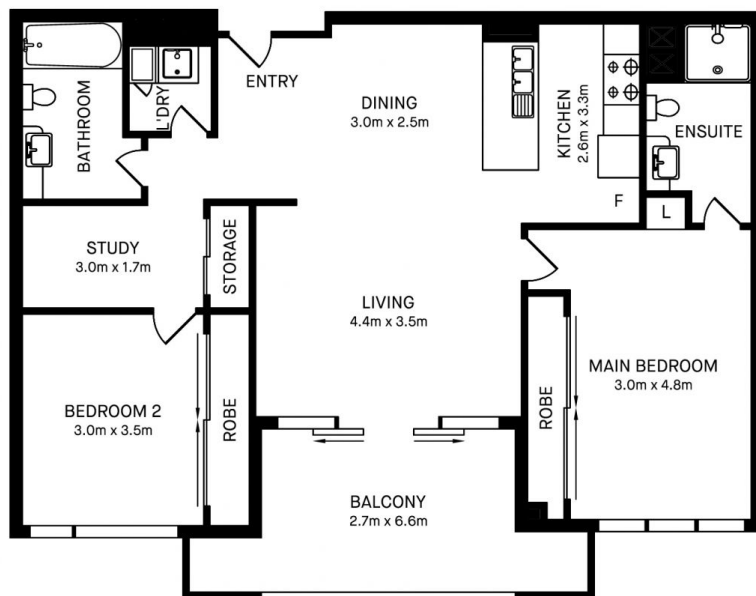
Dylan Choe

0416 932 977
dylanchoe@morton.com.au

Akanksha Chaudhari

0447 201 786
akanksha@morton.com.au

morton.com.au



407/6 Nuvolari Place, Wentworth Point

morton.



Please note these measurements are approximate only. The plans is intended as a rough guide for illustrative purpose. It is not warranted or guaranteed to be correct nor it is part of the sale or rental contract.

