



morton.

Pymont 21/1-27 Murray Street

3 2 2

Single level luxury defines this superb residence where designer style, space and mesmerising views combine to create a stunning lifestyle apartment. Set in Mirvac's prestige Gateway complex, it offers a home of outstanding quality with spacious proportions. This deluxe property showcases a flowing light-filled layout and enjoys a premier location on the doorstep of Darling Harbour, Star Casino, Barangaroo and Sydney's CBD.

- Prime north-east aspect with glimpses of the stunning harbour & cityscape
- Only 3 apartments per floor
- Double-glazed windows in master bedroom
- An expansive layout with over 146sqm of indoor/outdoor living space
- Large walls of glass that maximise natural light and city views
- A seamless integration with a wide terrace for entertaining
- Three bedrooms include a separate master wing with ensuite
- Sleek and modern kitchen fitted with European appliances

View

As advertised or by appointment

Agents

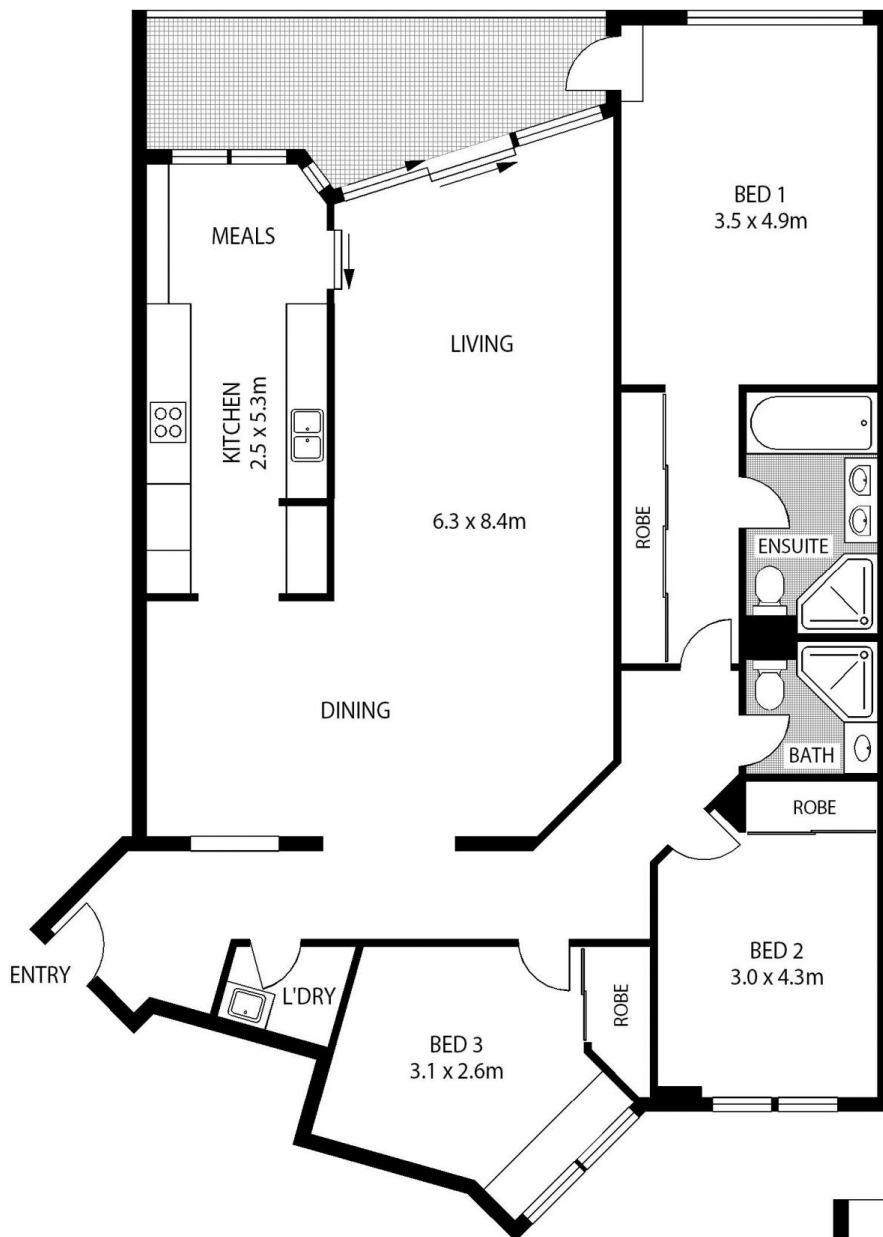
Ian Qiu

0447 696 425
ian@morton.com.au

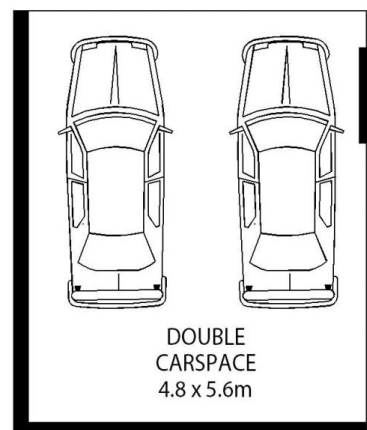
Naomie Texier

0439 247 710
naomie@morton.com.au

morton.com.au



LEVEL 3



**DOUBLE
CARSPACE**
4.8 x 5.6m



21/1 MURRAY STREET

PYRMONT

SCAPE Floor Planning Disclaimer: This floor plan is conceptual only. It is provided for illustrative purposes only and should not be relied upon. We make no guarantee as to the correctness of this plan. All interested parties should make and rely on their own enquiries in determining the accuracy of the information contained in this floor plan.