



# morton.

**Sydney** 311/45 Shelley Street



Nestled on the 3rd floor of King Street Wharf, this exceptional 79 sqm one bedroom apartment boasts a distinctive design. The spacious open-plan living area and bedroom seamlessly flow onto an expansive north-facing patio stretching the entire length of the apartment. From this vantage point, you'll be treated to captivating views of the city and glimpses of the picturesque Harbour to the West.

- Elegant French doors and sliding doors open up to a full-width entertainer's patio
- Spacious bedroom complemented by built-in wardrobes and direct access to the patio
- A stylish open plan kitchen, complete with island benches and a gas stove
- Contemporary mosaic-adorned bathroom, convenient internal laundry
- 24 h onsite security, integrated intercom system, lift level access
- Secure parking offering both convenience and peace of mind
- A prime location that places Darling Harbour and CBD within

### View

As advertised or by appointment

### Agents

#### Ettiene West

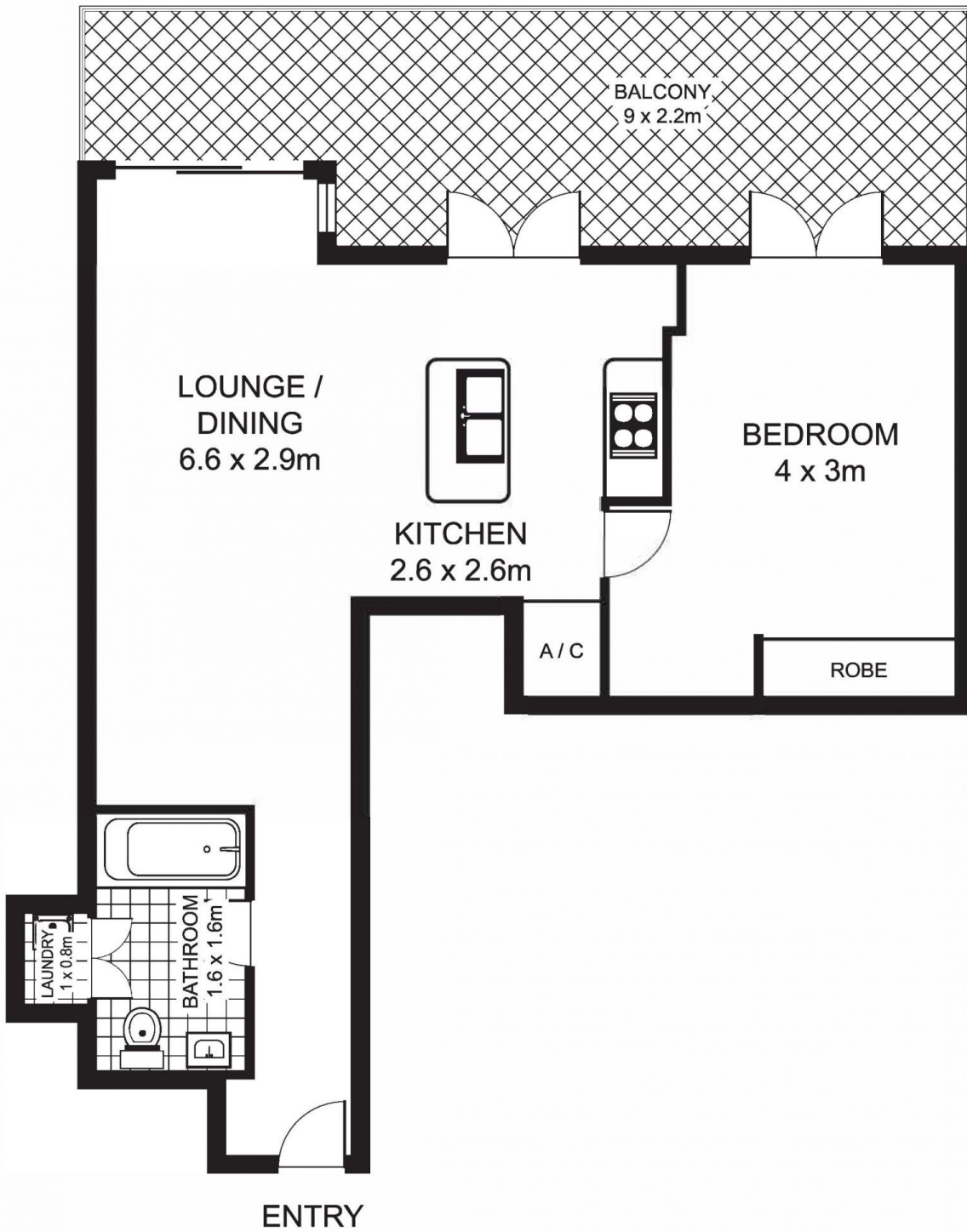
- ☎ 0410 593 749
- ✉ ettiene@morton.com.au

#### Arman Zounuzy

- ☎ 0410 539 793
- ✉ arman.zounuzy@morton.com.au

[morton.com.au](http://morton.com.au)

# 311/45 Shelley St, SYDNEY



This floor plan is intended as a guide only. Layout dimensions are approximate only. No representations or warranties of any nature whatsoever are given or intended. Any person using this information should rely on their own enquiries