



morton.

Wentworth Point 104/27 Bennelong Parkway

 2  1  1

Sit back and unwind by the pool in the landscaped common grounds or explore the many attractions of the Mariners Cove community that has the water's edge, Marina Square shops and the ferry wharf all within a gentle stroll. This well-appointed two-bedroom apartment enjoys a fantastic position with green parkland views and is freshly presented with bright interiors and tasteful modern finishes.

Elevated position that overlooks neighbouring green spaces
Bright and airy open design featuring sleek polished flooring
Large floor-to-ceiling windows and a covered sunlit balcony
Both bedrooms have built-in wardrobes and enjoy the outlook
Renovated kitchen with gas fittings and farmhouse-style sink
An oversized security car space, lift access and intercom entry
Residents access to the community's first-rate resort amenities

An idyllic lock-up and leave retreat on the edge of every convenience, the Spinnaker building includes full use of the Mariners Cove on-site amenities, where residents can enjoy


morton.com.au

View

As advertised or by appointment

Agents

Dylan Choe

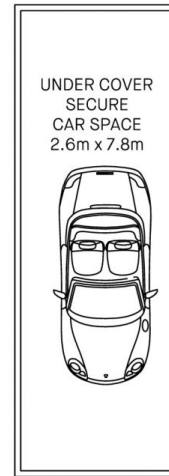
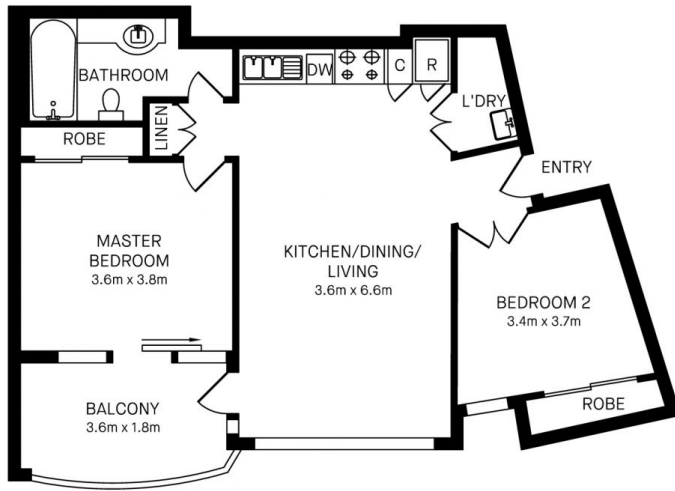
 0416 932 977

 dylanchoe@morton.com.au

Akanksha Chaudhari

 0447 201 786

 akanksha@morton.com.au



104/27 BENNELONG PARKWAY, WENTWORTH POINT



Please note these measurements are approximate only. The plans is intended as a rough guide for illustrative purpose. It is not warranted or guaranteed to be correct nor it is part of the sale or rental contract.

