



# morton.

**Pyrmont** 1004/41 Refinery Drive

 2  2  2

Discover an unparalleled urban oasis less than 100 metres to the waterfront. Elevated on the 10th level, this exquisite residence offers a breathtaking vantage point overlooking the lush Refinery Square and the masterfully designed Jacksons Landing precinct. This address not only offers a home; it presents a lifestyle defined by sophistication and convenience.

- Generously proportioned interiors, quality modern details
- Open plan living and dining areas flow effortlessly together
- Open kitchen with gas appliances, granite benches
- Generous size balcony flowing from living/dining area
- Spacious bedrooms with built-in wardrobes
- Two bathrooms, ensuite has both shower and bath
- Separate European style internal laundry with dryer
- Secure undercover tandem car spaces
- Reverse cycle air conditioning in living/ dining area
- Community aquatic centre, tennis courts, two gyms

### View



As advertised or by appointment

### Agents

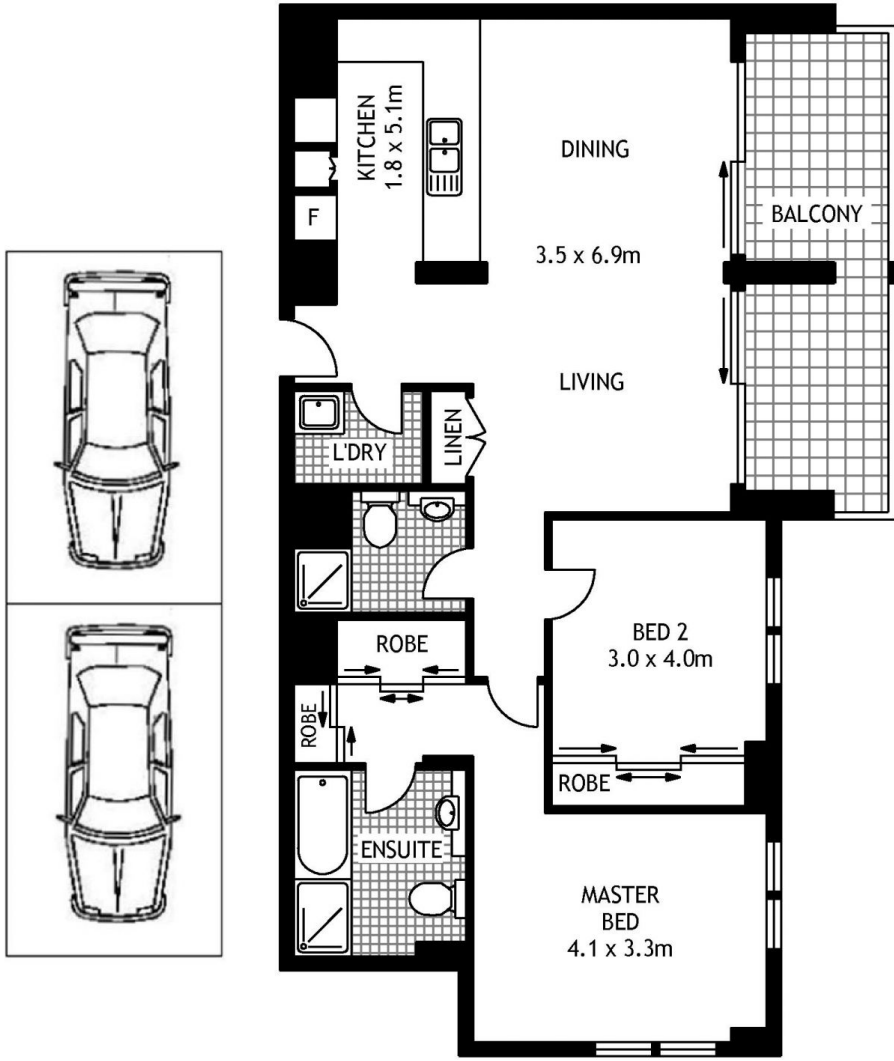
#### Ian Qiu

 0447 696 425  
 [ian@morton.com.au](mailto:ian@morton.com.au)

#### Naomie Texier

 0439 247 710  
 [naomie@morton.com.au](mailto:naomie@morton.com.au)

[morton.com.au](http://morton.com.au)



LEVEL TEN



1004/41 REFINERY DRIVE

PYRMONT

SCAPE Floor Planing Disclaimer: This floor plan is conceptual only. It is provided for illustrative purposes only and should not be relied upon. We make no guarantees to the correctness of this plan. All interested parties should make and rely on their own enquiries in determining the accuracy of the information contained in this floor plan.