



morton.

Sydney 805/45 Shelley Street

🛏 2 🚿 2 🚗 1

Nestled in a prime location, this top floor apartment boasts a captivating view that stretches across the harbour, offering a picturesque panorama of the Balmain peninsula. Bathed in an abundance of natural light due to its coveted northern orientation, this elegant residence exudes a sense of style and sophistication synonymous with harborside living. Unrivalled in terms of both quality and convenience, it's a leisurely stroll away from Wynyard and the bustling heart of the city.

- Expansive lounge and dining areas flooded with natural light
- Generously sized master bedroom comes with ensuite
- The gourmet kitchen is equipped with stainless steel gas appliances
- Modern comforts such as floating floors, ducted A/C, floor to ceiling windows
- North facing balcony, an ideal spot for outdoor relaxation
- 24 hour on site security, intercom, lift level access, attractive rental return

View

As advertised or by appointment

Agents

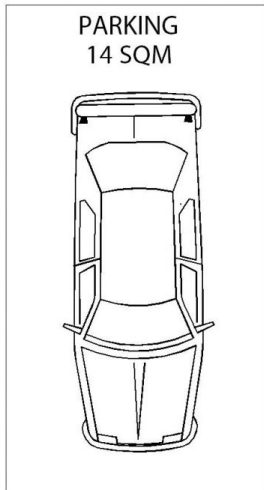
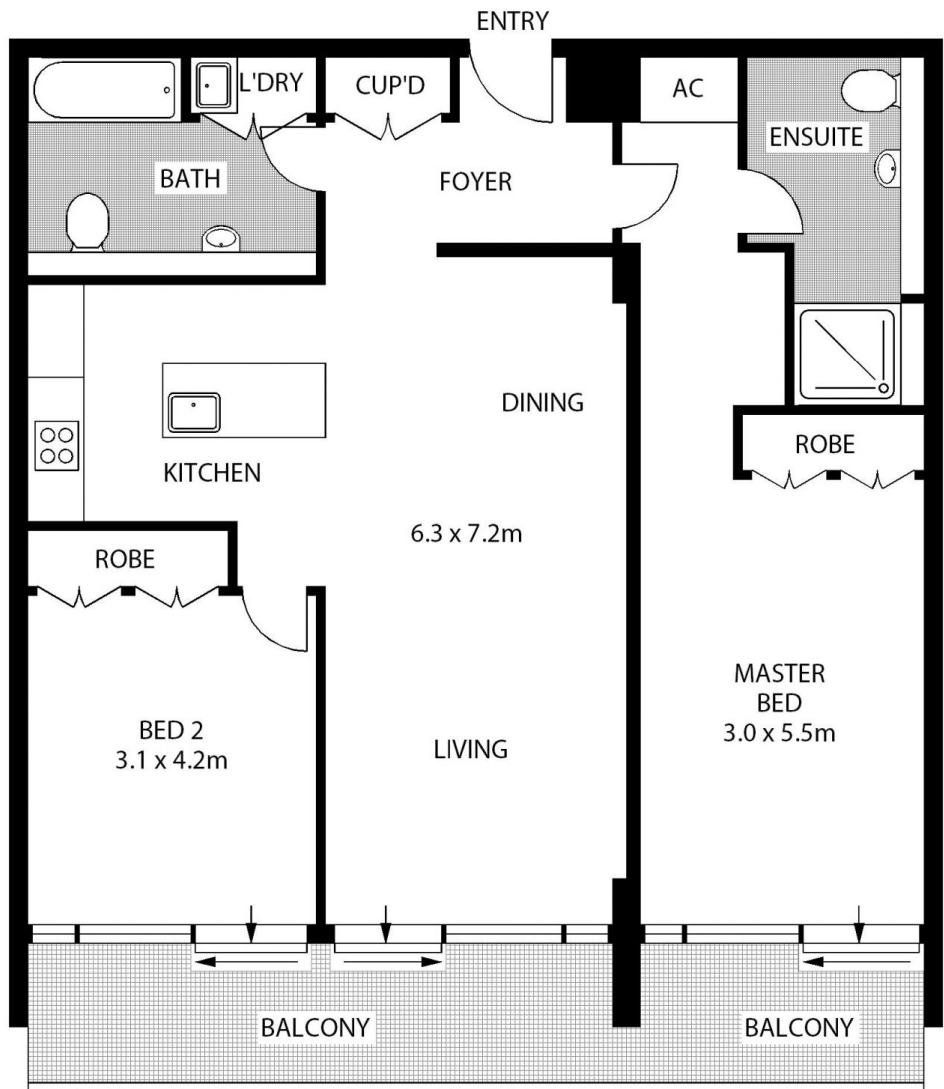
Ettiene West

📞 0410 593 749
✉ ettiene@morton.com.au

Arman Zounuzy

📞 0410 539 793
✉ arman.zounuzy@morton.com.au

morton.com.au



805/45 SHELLEY STREET

SYDNEY

SCAPE Floor Planning Disclaimer: This floor plan is conceptual only. It is provided for illustrative purposes only and should not be relied upon. We make no guarantee as to the correctness of this plan. All interested parties should make and rely on their own enquiries in determining the accuracy of the information contained in this floor plan.