



# morton.

**North Sydney** 212/225 Pacific Highway

2 
 2 
 1

Ideally located in the heart of North Sydney, this two bedroom residence offers an exceptional haven of contemporary style, space and convenience. From its sophisticated appearance and light filled architectural design, to its ultra convenient location and superb backdrop, Lucent's apartments offer an opulent yet relaxed lifestyle opportunity with lavish resort-style facilities that are second to none.

- Light filled interiors with full height floor to ceiling glass windows
- Contemporary kitchen featuring stone bench tops, polyurethane cabinetry and Miele appliances
- Open lounge and dining area featuring engineered timber floors
- Double bedrooms with carpet, built-ins, master with ensuite
- Rooftop gardens and infinity pool with panoramic views of Sydney Harbour
- Facilities include a gym, communal BBQ area and multi-use room
- Lift and swipe card access to the building with 24 hr

**morton.com.au**

## View

As advertised or by appointment

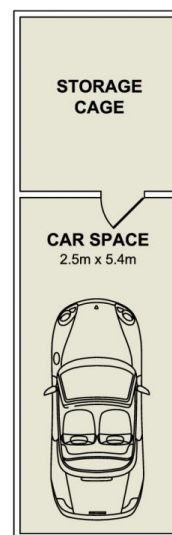
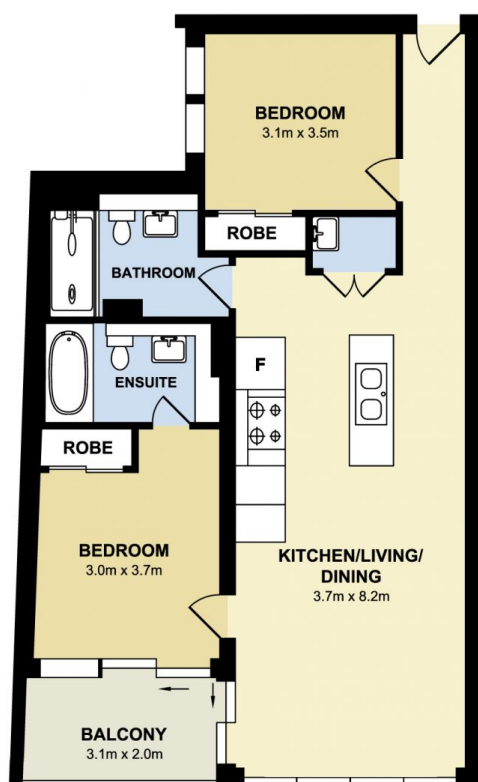
## Agents

### Konstantin Melnikov

0421 540 424  
 konstantin@morton.com.au

### Ferenc Goemoeri

0447 025 423  
 ferenc@morton.com.au



**morton.**

North Sydney 212/225 Pacific Highway