



**morton.**

**Sydney** 2004/38-42 Bridge Street

 3  2  2

Poised for spectacular city and Harbour Bridge panoramas from high in the sought-after Bridgeport Apartments security building, this superb dual-level residence offers a dynamic CBD lifestyle just a lift ride away from restaurants, shopping, cafés and the beating heart of the city. It combines elevated luxury with energetic surrounds and a buzzing inner-city setting to make a truly exceptional place to live.



- Generous light-filled open design with crisp contemporary decor
- Northerly views stretch over the harbour to the bridge and beyond
- Large covered terrace is the perfect New Year's Eve vantage point
- Floor-to-ceiling walls of glass and make the most of light and views
- Quality modern kitchen with dishwasher and sleek gas cooktop
- Three great-sized bedrooms each come with fitted wardrobes

#### **View**



As advertised or by appointment

#### **Agents**

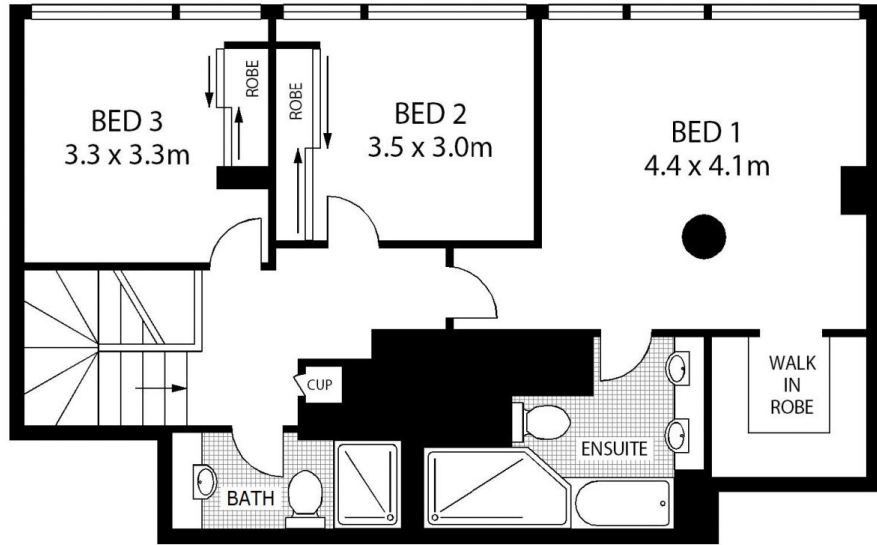
##### **Ettiene West**

 0410 593 749  
 ettiene@morton.com.au

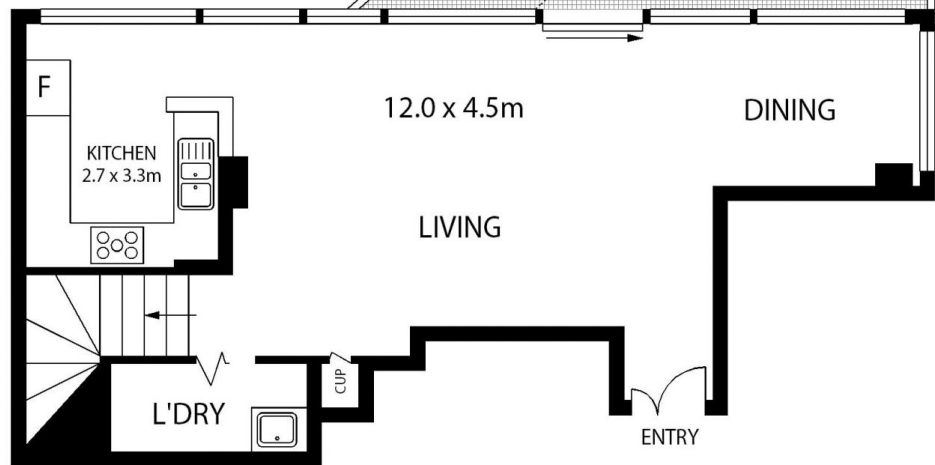
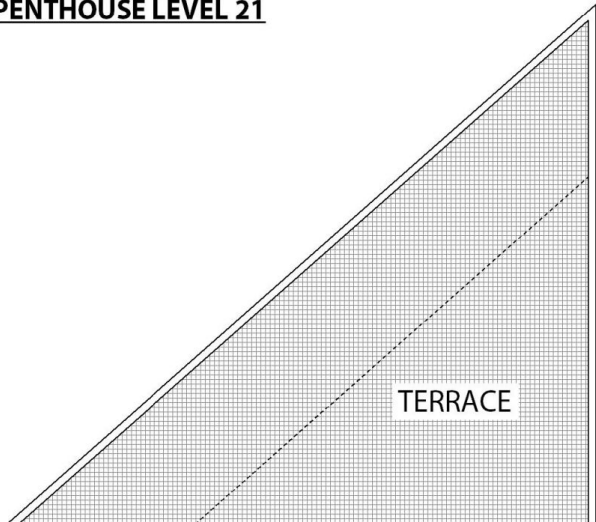
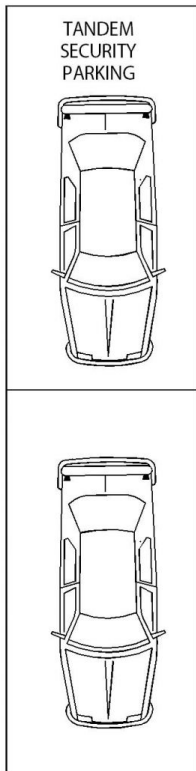
##### **Arman Zounuzy**

 0410 539 793  
 arman.zounuzy@morton.com.au

**morton.com.au**



**PENTHOUSE LEVEL 21**



**PENTHOUSE LEVEL 20**

