



morton.

Chippendale E714/3 Carlton Street

 2  2  1

Step into an extraordinary opportunity - an exquisite dual-key apartment that seamlessly marries contemporary opulence and urban convenience. Situated at the periphery of Sydney's CBD, this splendid residence graces the prestigious Central Park development. With two self-contained units, this dual-key apartment is an ideal choice for those seeking a versatile investment or the flexibility to host extended family and guests.

- Exceptional return return in a highly sought-after complex
- Current tenancies in place: E714 (\$600pw) + \$E714.1 (\$650pw)
- Positioned on the 7th floor, overlooking the rooftop pool and manicured gardens
- Contemporary finishes and fixtures throughout
- Expansive open-plan living spaces with elegant designer kitchens and bathrooms
- Centralized air conditioning, secure intercom, in-unit laundry
- 24-hour concierge, one secure parking space, and a storage unit

View

As advertised or by appointment

Agents

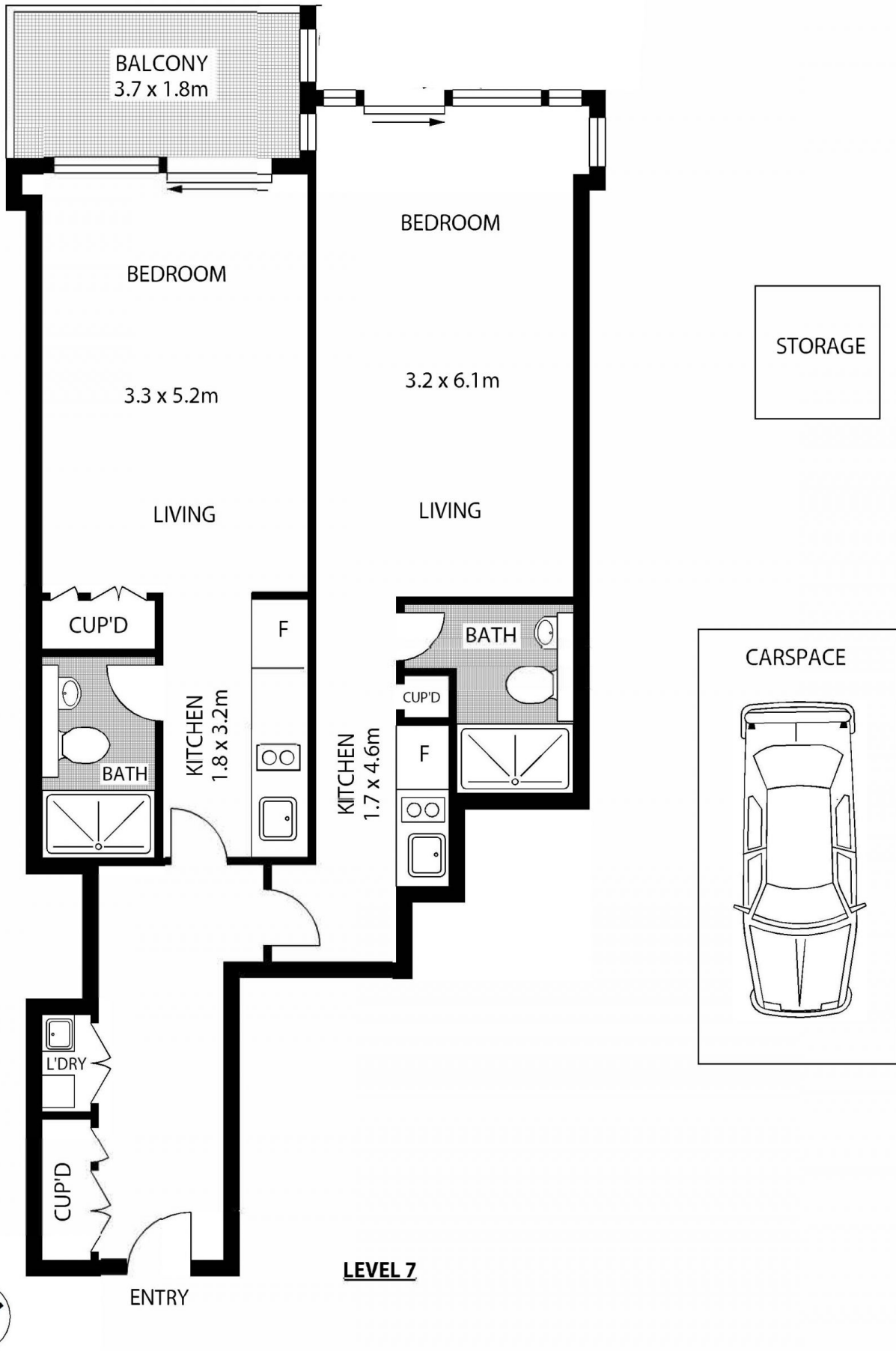
Ian Qiu

 0447 696 425
 ian@morton.com.au

Naomie Texier

 0439 247 710
 naomie@morton.com.au

morton.com.au



714/3 CARLTON STREET

CHIPPENDALE

SCAPE Floor Planning Disclaimer: This floor plan is conceptual only. It is provided for illustrative purposes only and should not be relied upon. We make no guarantee as to the correctness of this plan. All interested parties should make and rely on their own enquiries in determining the accuracy of the information contained in this floor plan.