



morton.

Sydney 512/45 Shelley Street

 2  2  1

Nestled within a stunning urban landscape, this remarkable apartment boasts an enviable position offering spectacular city vistas. Not only does it exude timeless charm, but also promises an exceptional investment opportunity, boasting a remarkable rental return. The epitome of convenient living featuring a spacious layout that ensures both comfort and privacy. Ideally situated in the vibrant King Street Wharf precinct, the bustling CBD, and a plethora of dining establishments, cafes, and bars, this residence promises an exceptional waterfront lifestyle.

- Expansive contemporary open-plan living, dining and kitchen area
- Leafy views from the east-facing balcony from every room
- Sleek white kitchen, gas cooking, dishwasher, large island
- Generous double bedrooms with ample built-in storage
- Convenient internal laundry and state-of-the-art video intercom system
- Secure parking for your peace of mind, 24 h on-site security
- Access to heated pool, spa, sauna and gym at additional



morton.com.au

View



As advertised or by appointment

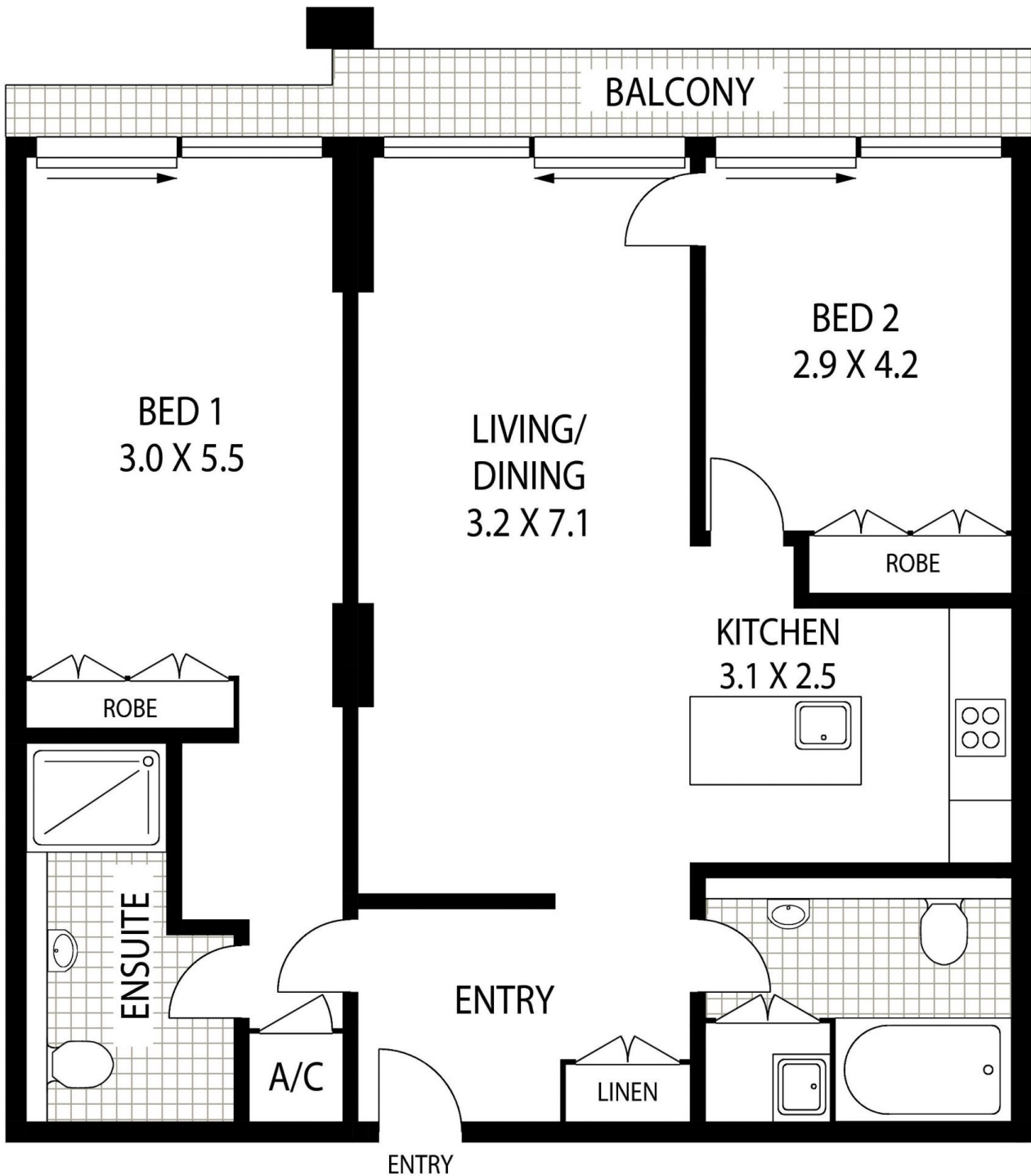
Agents

Ettiene West

 0410 593 749
 ettiene@morton.com.au

Arman Zounuzy

 0410 539 793
 arman.zounuzy@morton.com.au



NOTE :- SINGLE SECURITY PARKING

512/45 SHELLEY STREET

SYDNEY

This floor plan is provided for indicative purposes only. Measurements are approximate and not to scale. The vendor, agency and supplier will accept no liability for its accuracy. Interested parties are advised to make their own independent enquiries.