



# morton.

**Zetland** 1404/8 Kingsborough Way

 1  1

This sun drenched one-bedroom residence creates an instant impact with its generous proportions, sleek designer finishes and surrounding facilities. It is set within a prestige architectural complex and offers a quality lifestyle property that has all the amenities of Victoria Park, East Village and Green Square station a stroll from the front door.

- Bright open plan design featuring living and dining areas
- Level access to a private balcony with views
- Double bedroom with built-in
- Designer kitchen with dishwasher and gas appliances
- Fresh modern decor and easy-to-maintain
- A large designer bathroom plus an internal laundry
- Storage Cage

### View



As advertised or by appointment

### Agents

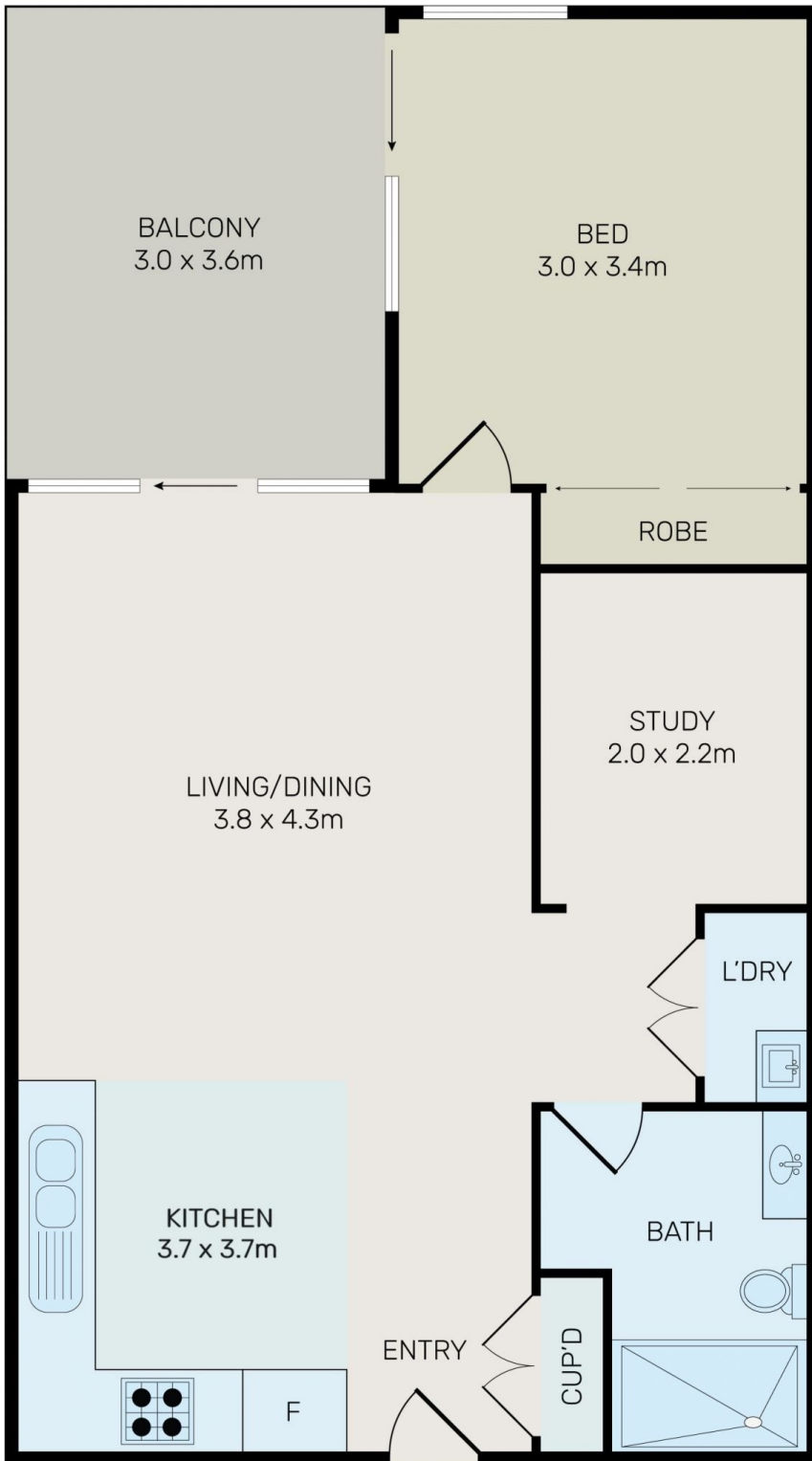
#### Calvin Chan

 0406 888 028  
 calvin@morton.com.au

#### Jackson Figueiras

 0448 764 345  
 jackson@morton.com.au

[morton.com.au](https://morton.com.au)



All information contained herein is gathered from all sources we believe to be reliable. However we cannot guarantee its accuracy and interested parties should rely on their own enquiries.



# 1404/8 Kingsborough Way, Zetland