



morton.

Melrose Park LG223/1C Lemon Tree Avenue

2 2 1

Convenience, community and sophisticated urban style combine for an amazing lifestyle with this quality two-bedroom courtyard apartment. Situated within the smart-living Melrose Park North village, it brings light, quality and cutting-edge design principles to its list of many highlights and provides a well-designed living space with direct access to its own private entertainment courtyard.

Own secure entrance via a sunlit and landscaped courtyard
 Fresh and stylish interiors have a flowing single-level layout
 A sun-filled open plan design features living and dining areas
 Bright north-easterly aspect and all-day sunshine throughout
 Two bedrooms both have built-ins and access to the courtyard
 The master bedroom has a walk-through wardrobe and ensuite
 Designer kitchen with breakfast bar and adjoining internal laundry
 A dedicated study, air-con and a security car space with storage
 Wi-fi enabled hotspots, EV charging stations and residents'

View

As advertised or by appointment

Agents

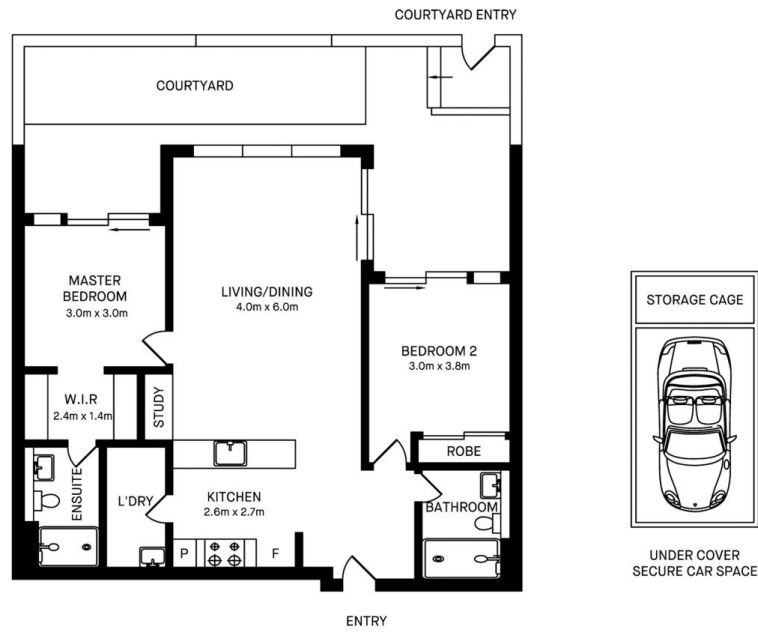
Dylan Choe

0416 932 977
 dylanchoe@morton.com.au

Akanksha Chaudhari

0447 201 786
 akanksha@morton.com.au

morton.com.au



LG223/1C LEMON TREE AVENUE, MELROSE PARK



Please note these measurements are approximate only. The plans is intended as a rough guide for illustrative purpose. It is not warranted or guaranteed to be correct nor it is part of the sale or rental contract.

