



morton.

Pyrmont 11/56 Pirrama Road

 2  2  2

Impeccably crafted with an unsurpassed attention to detail and a stylish artistic aesthetic, this exquisite residence defines sophisticated waterfront living. Positioned in the ultra exclusive "Sydney Wharf" this beautiful contemporary offering opens to embrace uninterrupted harbour and marina views.

- Immaculately presented with absolutely no expense spared
- Intuitively designed with an emphasis on easy entertaining
- Expansive living areas flow seamlessly to a generous deck
- Deluxe marble kitchen with chic Miele gas appliances
- King sized bedrooms plus home office or guest room
- Custom built-in wardrobes and large storage room
- Polished floors, ducted air conditioning and video intercom
- Resort facilities include a pool, gym, 27 visitor parking spots
- Two storage cages, secure side by side parking, concierge

View

As advertised or by appointment

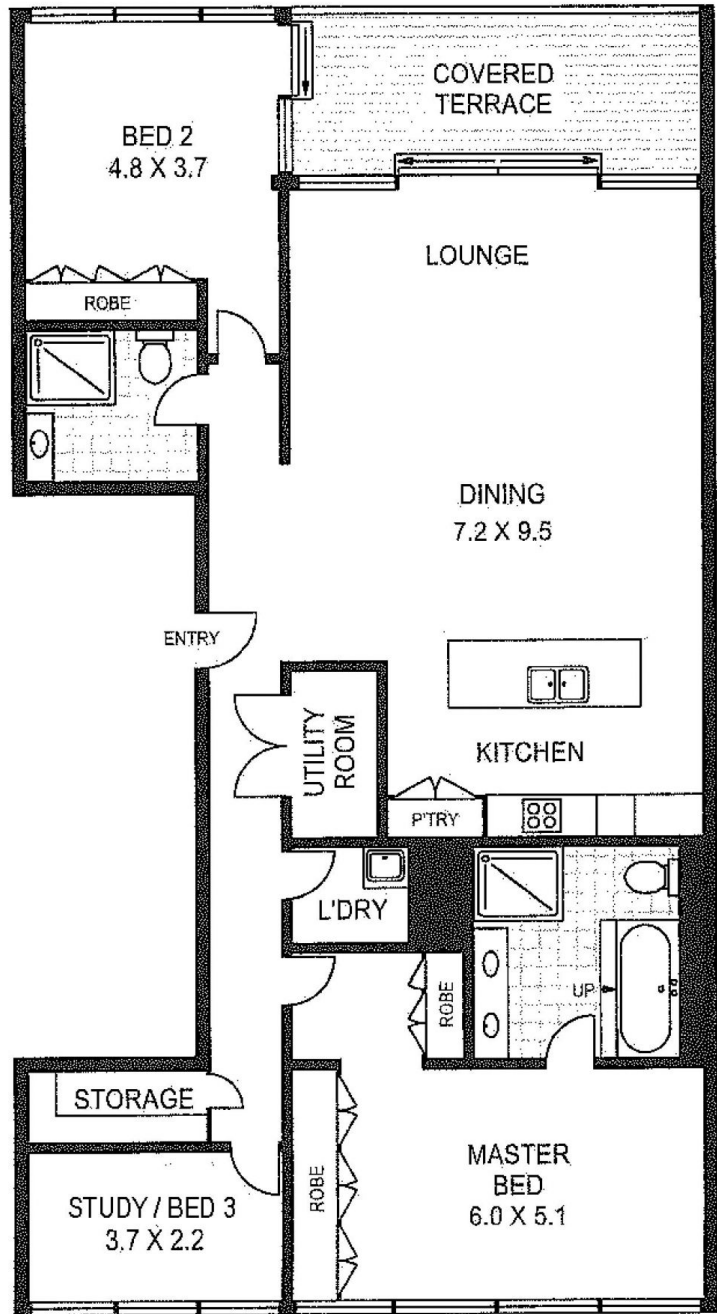
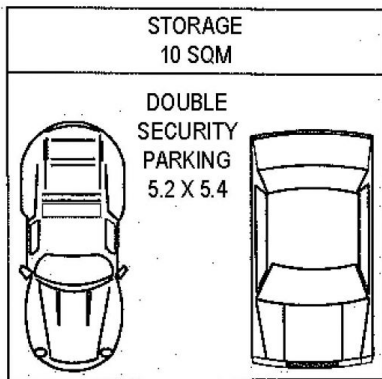
Agent

James Crow

 0410 593 057

 james@morton.com.au

morton.com.au



LEVEL THREE



11/56 PIRRAMA ROAD

PYRMONT

Floor Plan Disclaimer: Mind the Gap (mtg) floor plans / site plans are intended as a guide only. No representations or warranties of any nature whatsoever are given or intended and any person using this information should always rely on their own enquiries. mtg property marketing services - 1300 133 145 - photography, floor plans, virtual tours, video tours, copywriting, project marketing - www.mindthegap.com.au