





morton.

Glebe 605/2H Wentworth Park Road

 1  1

Welcome to "Mezzo," where classic heritage architecture meets stunning contemporary design. Nestled amidst a lush, green landscape, this apartment offers peace & privacy, providing the perfect blend of convenience, comfort, and luxury. Located in the vibrant heart of Glebe, this residence ensures you enjoy a premium lifestyle with everything at your fingertips. Sydney Fish Markets and Broadway Shopping Centre are just minutes away.

View

As advertised or by appointment

Agent

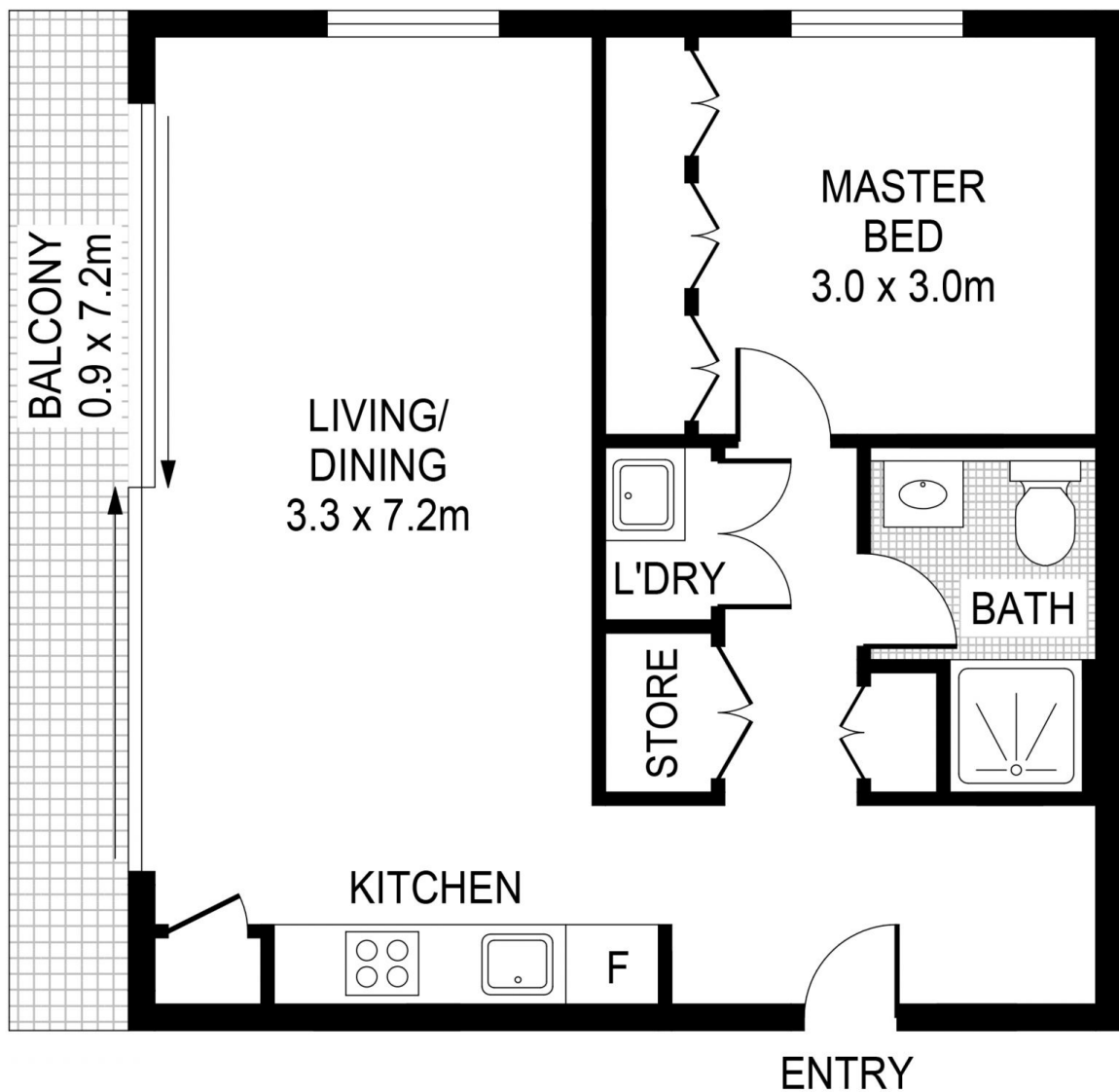
James Crow

 0410 593 057

 james@morton.com.au

- Bright open plan design with just one common wall
- Large private balcony spans entire living space
- Sleek kitchen, stone bench tops, gas cooking, and dishwasher
- Queen-sized bedroom with built-in wardrobes
- Modern bathroom, separate internal laundry
- Stay comfortable year-round with ducted air conditioning
- Security building with lift access
- Two rooftop gardens, BBQ area where panoramic views

morton.com.au



PLANS SHOWN ONLY INDICATIVE OF LAYOUT. DIMENSIONS ARE APPROXIMATE.



GLEBE 605/2H Wentworth Road

morton.