



morton.

Luddenham 2 Ventana Court

6 4 13

Welcome to an impressive home of luxury and elegance located in the heart of the exclusive Twin Creeks Estate. Nestled within its private and secure enclave, this palatial 6-bedroom brand new home exemplifies contemporary Australian living. Framed by meticulously landscaped gardens and an alfresco dining and pool area of your dreams, this incredible opportunity offers resort-style living on a grand scale.

- Brand-new, single-level home, never lived in previously
- Grand entrance with covered porch and entry foyer
- Multiple living areas, both inside and out, perfect for multi-generational living
- All-season alfresco living and dining with fully equipped outdoor kitchen including pizza oven
- Family room with separate lounge and dining, fully tiled, with gas fireplace
- State-of-the-art kitchen with stone benchtops, Ilve appliances, and servery to alfresco
- Butler's pantry off kitchen with sink, counter space, and

View

As advertised or by appointment

Agents

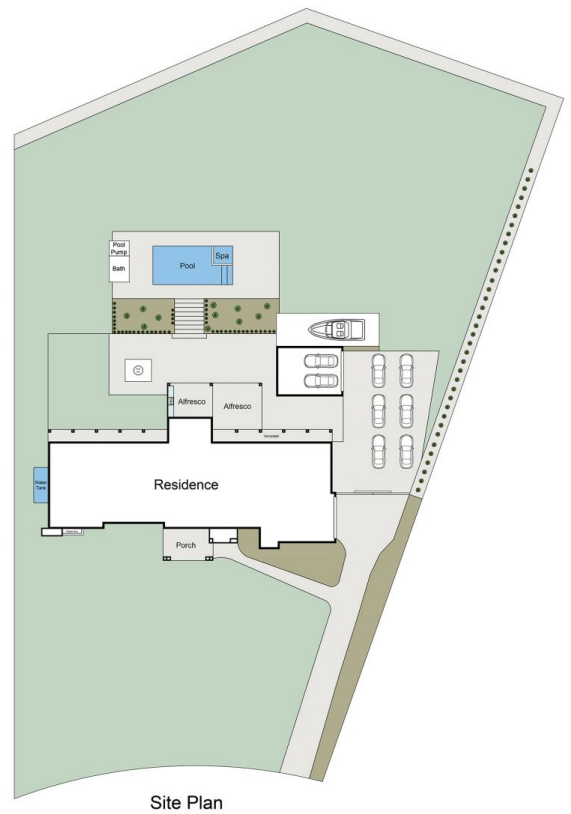
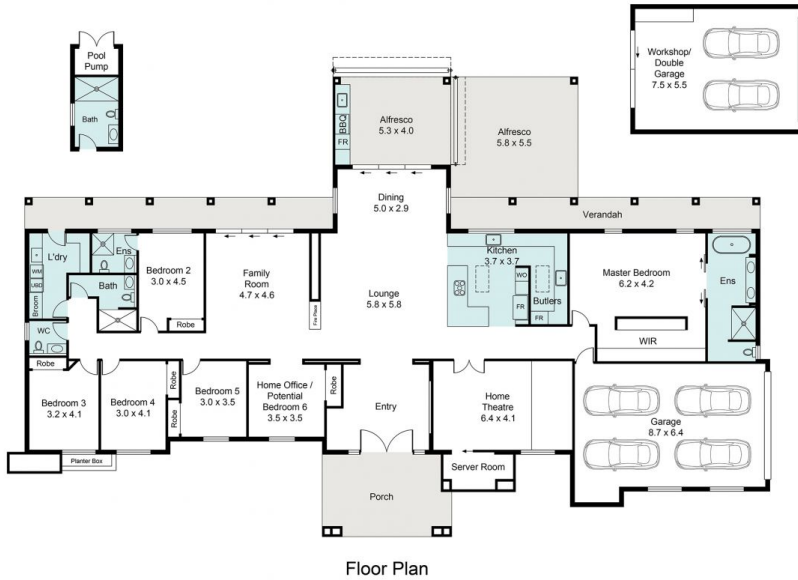
Konstantin Melnikov

0421 540 424
konstantin@morton.com.au

Ferenc Goemoeri

0447 025 423
ferenc@morton.com.au

morton.com.au



2 Ventana Court, Luddenham

Every care has been taken to verify the accuracy of the details and dimensions in this property plan. Prospective purchasers are advised to make their own enquiries to satisfy themselves in all respects. The plan is a representation only and is not necessarily to scale.