

VIRTUALLY STAGED



VIRTUALLY STAGED



VIRTUALLY STAGED



**morton.**

**Sydney** 1106/343-357 Pitt Street



Nestled in the heart of Sydney, this spacious apartment in the prestigious 'Century Tower' promises a remarkable investment opportunity or an urban oasis. Filled with natural light interior that seamlessly combines convenience and space, along with resort-style amenities, this property is tailor-made for those who relish an inner-city lifestyle.

- Expansive sliders open onto a generous undercover south facing balcony
- Open-plan living and dining area features low-maintenance wooden flooring
- Master retreat boasts a full-wall built-in robe and direct access to the balcony
- Bathroom equipped with both a separate bathtub and spacious shower
- Secure entry with intercom, an internal laundry, and ducted air-conditioning
- Well-maintained resort-style amenities such as lap pool, spa, gym, and sauna
- Short stroll away from numerous transport options and

#### View

As advertised or by appointment

#### Agents

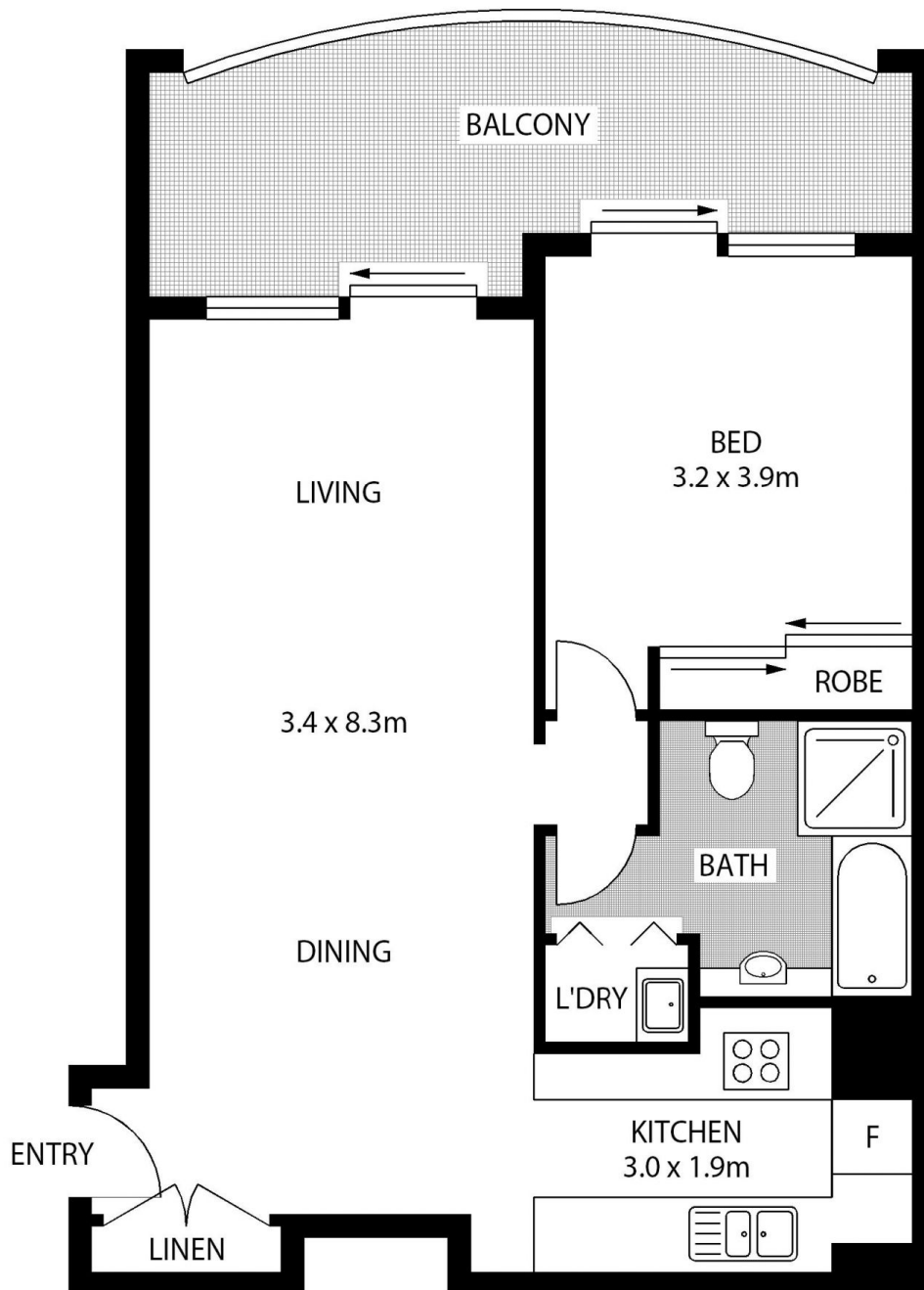
##### Ettiene West

- 📞 0410 593 749
- ✉️ ettiene@morton.com.au

##### Arman Zounuzy

- 📞 0410 539 793
- ✉️ arman.zounuzy@morton.com.au

**morton.com.au**



**LEVEL 11**



**1106/343 PITT STREET**

**SYDNEY**

SCAPE Floor Planning Disclaimer: This floor plan is conceptual only. It is provided for illustrative purposes only and should not be relied upon. We make no guarantee as to the correctness of this plan. All interested parties should make and rely on their own enquiries in determining the accuracy of the information contained in this floor plan.