



# morton.

**Sydney** 48/177-181 Clarence Street

 1  1  1

Nestled within the historic Broughton House, a designated heritage site, this modern apartment offers a tranquil retreat in the heart of the bustling CBD, complete with coveted parking. This urban oasis beckons with its spacious, open-plan entertainment area, high quality finishes and private balcony. Broughton House boasts an array of enticing amenities, including a floodlit tennis court, a heated pool and spa, rejuvenating saunas, and indoor/outdoor communal areas with a fully fitted kitchen.



- Open plan lounge, dining and kitchen area
- High ceilings, private south facing balcony
- Spacious bedroom with ample storage, ensuite
- Internal laundry and ducted air conditioning
- Renowned heritage-listed building in Sydney CBD
- Predominately owner-occupied building
- Secure parking on title, on site building manager
- Indoor facilities: pool, spa, fully equipped kitchen
- Outdoor facilities: rooftop tennis court, BBQ area

### View



As advertised or by appointment

### Agents

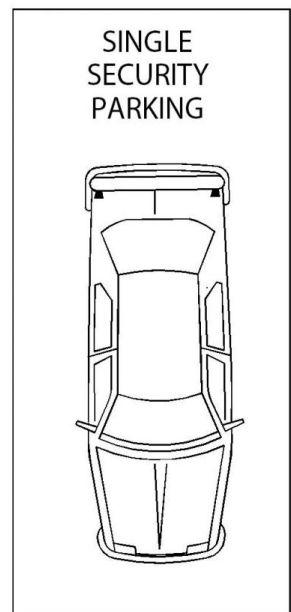
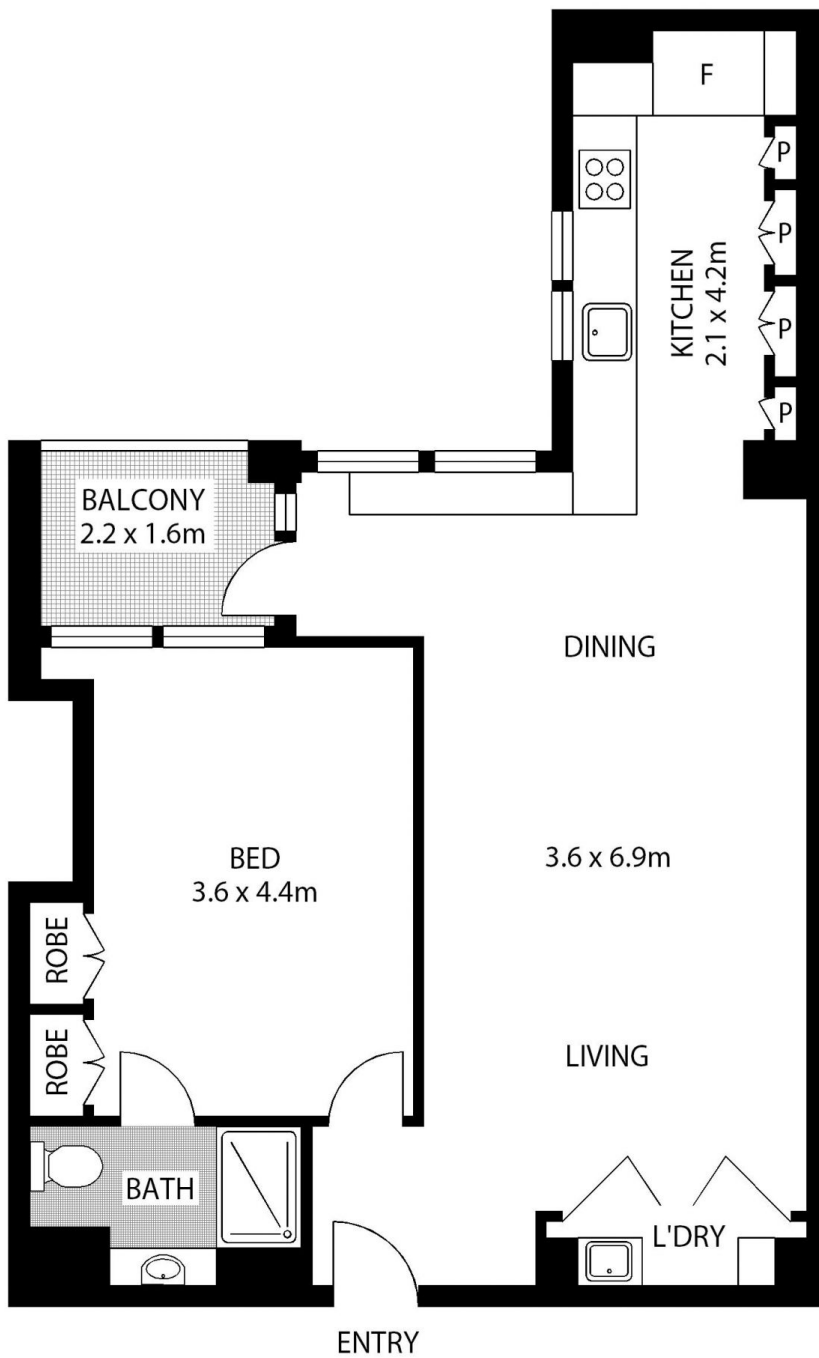
#### Ettiene West

 0410 593 749  
 ettiene@morton.com.au

#### Arman Zounuzy

 0410 539 793  
 arman.zounuzy@morton.com.au

[morton.com.au](https://morton.com.au)



**LEVEL 4**



**48/177-181 CLARENCE STREET**

**SYDNEY**

SCAPE Floor Planning Disclaimer: This floor plan is conceptual only. It is provided for illustrative purposes only and should not be relied upon. We make no guarantee as to the correctness of this plan. All interested parties should make and rely on their own enquiries in determining the accuracy of the information contained in this floor plan.